

Project Number: HN000236-C



ABORIGINAL CULTURAL HERITAGE MANAGEMENT SUB-PLAN: NEWCASTLE GRAMMAR SCHOOL

FINAL 1 / 11 / 2023

REPORT TO: APP CORPORATION PTY LIMITED

Level 2, 426 King Street
Newcastle, NSW 2300

REPORT BY HERITAGE NOW PTY LTD

projects@heritagenow.com.au
0460 744 466
www.heritagenow.com.au



Executive Summary

Heritage Now Pty Ltd (Heritage Now) was engaged by APP to undertake an Aboriginal Cultural Heritage Management Sub Plan (“Plan”) for the redevelopment of Newcastle Grammar School, Newcastle, NSW.

The Project Area is on the corner of Union Street and Parkway Avenue (127 Union Street), Cooks Hill (Lot 012, DP861562). It is within the Newcastle Local Government Area and within the Awabakal Local Aboriginal Land Council Boundaries.

This project was assessed as a State Significant Development (SSD-13895306). An Aboriginal Cultural Heritage Assessment Report was prepared by Heritage Now (Heritage Now 2021) as part of the Environmental Impact Statement. It was prepared in consultation with the Registered Aboriginal Parties (RAPs). The SSD application was approved on 9 January 2023 pursuant to Part 4 of the Environmental Planning and Assessment Act 1979 (EP&A Act). This Aboriginal Cultural Heritage Management Sub Plan was sent to the RAPs on 5/7/2023 with 28 days allowed for feedback. No feedback was received from this mail out.

Subsequent to this request for feedback by email, all RAPs were contacted via phone on 11/9/2023 as detailed in the consultation log in Appendix 1. Two verbal responses agreeing to the contents of the Aboriginal Cultural Heritage Sub-Plan and the contained excavation methodology were received and were documented by email, as per Appendix 1. In addition, five responses to the invitation to tender for fieldwork as part of the heritage management of the Project Area were received. Contents of the tender responses are commercial in-confidence and therefore are not contained in the consultation documentation compilation, however, the responses have been documented in the consultation log in Appendix 1.

This Plan has been prepared in accordance with the Consent Conditions.

Acronyms and Definitions

Acronym/Term	Definition
Aboriginal object	Aboriginal object means any deposit, object or material evidence (not being a handcraft made for sale) relating to the Aboriginal habitation of the area that comprises New South Wales, being habitation before or concurrent with (or both) the occupation of that area by persons of non-Aboriginal extraction and includes Aboriginal remains (as per <i>NPW Act 1974</i>).
Aboriginal place	Any place declared to be an Aboriginal place under Section 84 of the NPW Act.
ACHMSP	Aboriginal Cultural Heritage Management Sub-Plan
AHD	Australian Height Datum
AHIMS	Aboriginal Heritage Information Management System (register for Aboriginal sites in NSW)
AHIP	Aboriginal Heritage Impact Permit (as per NPW Act 1974)
A Horizon	The top layer of mineral soil in a soil profile. It is usually broken into A ₁ and A ₂ soils, with the former tending to have a relatively high dark organic content, while the latter is paler.
B Horizon	The B horizon underlies the A horizon of a soil profile and is generally a high-clay content soil.
DCDB	Digital Cadastral Database (NSW)
DCP	Development Control Plan
DECCW	Department of Environment, Climate Change and Water, NSW (became the Office of Environment and Heritage in 2011, a role now assumed by Heritage NSW).
DP	Deposited Plan
DTDB	Digital Topographic Database (NSW)
EP&A Act	Environmental Planning and Assessment Act (1979)
Ex situ	At a location that is different from the original location. Often refers to conserving Aboriginal objects at a location different from its original location.
GPS	Global Positioning System
Holocene	Geological epoch (period) typically defined as the time period that commenced approximately 11,700 years ago and is the current period of geological time. This period is generally warmer and wetter than the preceding Pleistocene period.

Acronym/Term	Definition
In situ	In situ, Latin for “in the place”, refers to an artefact that has not been moved from its original resting place or the place where it was deposited.
LALC	Local Aboriginal Land Council (Land Council under the Aboriginal Land Rights Act 1983)
LGA	Local Government Area
OEH	Office of Environment and Heritage, NSW (Now Heritage NSW)
m	Metric metres
Non-perennial	In terms of waterways, it means a waterway that is usually partially or fully dry for part of the year.
NPW Act	National Parks and Wildlife Act 1974
PAD	Potential Archaeological Deposit
Perennial	In terms of waterway, it means a waterway that has year-round water.
Pleistocene	Geological epoch (period) is typically defined as the time period that commenced approximately 2.6 million years ago and lasted until approximately 11,700 years ago. This period spans the world's recent period of repeated glaciations. The late Pleistocene, in which humans began occupying Australia, is generally colder and dryer than the Holocene.
RAPs	Registered Aboriginal Parties (Aboriginal organisations and individuals who were consulted for the Project following Aboriginal Cultural Heritage Consultation Requirements for Proponents)
SIX Maps	Spatial Information Exchange (NSW government portal holding a range of spatial and property data)
SSD	State Significant Development

Version Control

Version	Revision Description	Reviewed by	Date	Approved by	Date Approved
Draft	Draft for Client	Trishia Palconit, Heritage Now, Heritage Consultant	27/4/2023	Tessa Boer-Mah, Heritage Now, Principal Heritage Consultant	27/4/2023
FINAL	Final post RAP consultation	Trishia Palconit, Heritage Now, Heritage Consultant	8/8/2023	Tessa Boer-Mah, Heritage Now, Principal Heritage Consultant	8/8/2023
FINAL	FINAL with additional Aboriginal consultation	Tessa Boer-Mah, Heritage Now, Principal Heritage Consultant	11/9/2023	Tessa Boer-Mah, Heritage Now, Principal Heritage Consultant	11/9/2023
FINAL	FINAL with Heritage NSW clarifications	Tessa Boer-Mah, Heritage Now, Principal Heritage Consultant	5/10/2023	Tessa Boer-Mah, Heritage Now, Principal Heritage Consultant	5/10/2023
FINAL	FINAL with Heritage NSW clarifications	Ngaire Richards, Heritage Now, Principal Heritage Consultant	17/10/2023	Tessa Boer-Mah, Heritage Now, Principal Heritage Consultant	17/10/2023
FINAL	FINAL with Heritage NSW clarifications	Ngaire Richards, Heritage Now, Principal Heritage Consultant	1/11/2023	Tessa Boer-Mah, Heritage Now, Principal Heritage Consultant	1/11/2023

Contents

1	Introduction	1
1.1	Project Area	1
1.2	Project Scope	1
1.3	Project Approval and SSD Compliance Matrix	2
1.4	Authorship and Copyright	3
2	Legislative Context	4
2.1	National Parks and Wildlife Act 1974	4
2.2	National Parks and Wildlife Regulations 2019	4
2.3	Aboriginal Land Rights Act 1983 (NSW)	5
2.4	Environmental Planning and Assessment Act 1979	5
2.5	Newcastle Local Environmental Plan 2012	5
3	Aboriginal Consultation	6
3.1	Background	6
3.2	Aboriginal Consultation Undertaken for this Sub-Plan	7
3.3	Further Aboriginal Consultation for future works	7
4	Heritage Background	8
5	Impact Assessment	11
5.1	Geotechnical and Contamination Information	14
6	Management of Archaeological Resource	18
6.1	Research Questions and Aims	18
6.1.1	Aims of the Test Excavation	18
6.1.2	Aims of a Salvage Excavation	18
6.2	Sub-surface excavation methods	19
6.2.1	Spatial Sample for Test Excavation	19
6.2.2	Triggers for Salvage Excavation	19
6.2.3	Archaeological unit (pits and trenches)	20
6.2.4	Excavation hand field methods and sieving	20
6.2.5	Excavation mechanical methods and installation of shoring	20
6.2.6	Methods for excavation of features	21
6.3	Artefact Curation, Storage, Recording and Analysis	21
6.3.1	Stone artefact recording	22
6.3.2	Shell and Bone recording	23
6.3.1	Analysis of archaeological materials	23

6.4	Collection of Artefacts without Archaeological Context.....	23
6.5	Reporting on Archaeological Material	23
6.6	Protocols for Unexpected Finds.....	23
6.7	Protocols for Human Remains	24
6.8	Site Induction Protocols and Training	24
6.9	Heritage Interpretation.....	24
7	Roles and Responsibilities and Compliance	25
7.1	Project Manager.....	25
7.2	Archaeologist	25
7.3	Registered Aboriginal Parties.....	25
7.1	Contact List and Compliance Register	25
8	References	26
	Appendix 1 Aboriginal Consultation	A
	Appendix 2 Summary of Aboriginal site features from excavations in Newcastle.....	B

Tables

Table 1.	Relevant Heritage Consent Conditions under the SSD Approval and Compliance	2
Table 2.	Registered Aboriginal Parties	6
Table 3.	Geotechnical Results summary, note the fill references in this table relate to geotechnical fill and this definition does not always align with an archaeological definition of fill.	14
Table 4.	Minimum flaked stone attributes	22
Table 5.	Additional stone artefact attributes which may be used.....	22
Table 6.	Summary of Aboriginal site features from excavations in Newcastle.	3

Figures

Figure 1.	Project Area.....	1
Figure 2.	Detail of 1910 Map of Newcastle showing location of Project Area and former creek line ...	9
Figure 3.	Project Area and AHIMS Sites	10
Figure 4.	Hatch Coversheet from 367874-H-00-DR-S-0001 Revision P02	12
Figure 5.	Hatch 367874-H-01-DR-S-0200 Revision P03	13
Figure 6	Contamination hotspot – not to be subject to archaeological excavation.....	17
Figure 7	Indicative test pits for excavation (avoiding areas of contamination and trees)	19

1 Introduction

Heritage Now Pty Ltd (Heritage Now) was engaged by APP to undertake an Aboriginal Cultural Heritage Management Plan (“Plan”) for the redevelopment of Newcastle Grammar School, Newcastle, NSW.

1.1 Project Area

The Project Area is on the corner of Union Street and Parkway Avenue (127 Union Street), Cooks Hill (Lot 102, DP861562). It is within the Newcastle Local Government Area. The traditional custodians are acknowledged, and the Project Area is within the Awabakal Local Aboriginal Land Council boundaries. The Project Area extent is approximately 1,000 m² (Figure 1).



Figure 1. Project Area

1.2 Project Scope

The stage 1 proposal includes:

- an increase in student numbers from 256 to 480;
- demolition of a covered outdoor learning area as well as blocks C, D and F;
- construction of a three-storey building with a rooftop play area facing Union Street;
- refurbishment of building B for use as administration, staff and offices;

- construction of a one-way road adjacent to the northern boundary to provide a kiss and drop area; o stormwater and service upgrades; and o site landscaping.

The concept development proposal includes:

- an overall increase in student numbers to 640;
- construction of a two-storey plus basement building adjacent to Corlette Street. The basement area would provide parking for 31-35 cars;
- alterations and additions to building A including the refurbishment of the Sandi Warren performance centre, a new canteen, library and specialist learning facilities; and
- site landscaping.

1.3 Project Approval and SSD Compliance Matrix

This project was assessed as a State Significant Development (SSD-13895306). An Aboriginal Cultural Heritage Assessment Report was prepared by Heritage Now (Heritage Now 2021) as part of the Environmental Impact Statement. It was prepared in consultation with the Registered Aboriginal Parties (RAPs). The SSD application was approved on 9 January 2023 pursuant to Part 4 of the Environmental Planning and Assessment Act 1979 (EP&A Act). The conditions of approval and how they are met in this report are summarised in Table 1.

Table 1. Relevant Heritage Consent Conditions under the SSD Approval and Compliance

Conditions	Project condition compliance within this report
<i>Under Part E: Prior to Commencement of Construction for Stage 1 - The Aboriginal Cultural Heritage Management Sub-Plan (ACHMSP) must address, but not be limited to the following:</i>	
a) be prepared by a suitably qualified and experienced expert in consultation with the Registered Aboriginal Parties;	This report, Section 1.4 and Section 3
b) be submitted to the satisfaction of the Planning Secretary prior to construction of any part of the development;	To be submitted on completion of Aboriginal consultation
c) details of an archaeological test and salvage excavation program to occur post-project approval but implemented before natural soil layers are disturbed;	This report, Section 6.2.
d) protocols for unexpected finds and human remains;	Unexpected finds procedure is in Section 6.6 of this report and of human remains in Section 6.7
e) on-site inductions and interpretation as described in recommendation 2 of the Aboriginal Cultural Heritage Assessment Report prepared by Heritage Now dated 6 October 2021; and	On-site induction protocols are outlined in Section 6.8 of this report and heritage interpretation in Section 6.9
f) management of archaeological resources.	Section 6 of this report

1.4 Authorship and Copyright

This report was produced by the Heritage Now team. The report was written by Tessa Boer-Mah (Principal Heritage Consultant, Heritage Now).

Tessa's qualifications and industry positions include Bachelor of Arts with Honours (Archaeology and Heritage) University of Sydney 2002, Master of Philosophy (Archaeology and Heritage) University of Sydney 2008, Australian Association of Consulting Archaeologists Inc (AACAI) – National Secretary (and full member) 2021-present, Hunter Future Directions Property Council – Committee Member 2020-2022, and ICOMOS International Member.

Quality review was undertaken by Trishia Palconit (Heritage Officer, Heritage Now). Trishia's qualifications include Bachelor of Arts (Anthropology) 2015, Diploma in Archaeology 2019, International Masters in Quaternary and Prehistoric Archaeology 2022 Ferrara University.

Heritage Now Pty. Ltd. retains the copyright of this report.

2 Legislative Context

This section provides an outline of the Acts, Regulations and guidelines under which this assessment was undertaken. It is for information purposes only and should not be taken as legal advice.

2.1 National Parks and Wildlife Act 1974

This Act contains the provisions for protecting Aboriginal objects in NSW. Aboriginal objects are protected regardless of whether they are in their original context (location) or not, and it is an offence to harm an Aboriginal object regardless of whether you know it is an Aboriginal object or not. Protection under Section 86 of the Act is as follows:

- s86(1) A person must not harm or desecrate an object that the person knows is an Aboriginal object.
- s86(2) A person must not harm an Aboriginal object.
- s86(3) A person must not harm or desecrate an Aboriginal place.

Known Aboriginal sites in NSW are registered on the Aboriginal Heritage Information Management System (AHIMS) as 'Aboriginal objects', but all Aboriginal sites regardless of their registration status on AHIMS are protected in NSW. This includes individual artefacts up to complex sites.

An Aboriginal Place is an area of land that "is or was of special significance with respect to Aboriginal culture", and is recognised by a declaration published in the Government Gazette by the Minister for Environment and Heritage.

Under Section 86 of the NPW Act, it is an offence to harm (destroy, deface or damage) or desecrate an Aboriginal object or an Aboriginal Place. Both site types are protected. The definition of harm includes moving an object from the land on which it is situated. The NPW Act sets out tiered strict liability offences and penalties for harming or desecrating Aboriginal objects or places.

Under Section 87, there are certain defences to the offence of harm. These include that harm was carried out under an Aboriginal Heritage Impact Permit (AHIP); that due diligence was exercised to determine if an action would harm an Aboriginal object; or that an activity was prescribed by the National Parks and Wildlife Regulation 2019 as being low impact.

Penalties for harming Aboriginal objects or places range from \$80,000–\$800,000 for individuals and \$330,000–\$1,650,000 for corporations, and may also include imprisonment. Under Section 87, there are certain defences from prosecution. These include that harm was authorised under an Aboriginal Heritage Impact Permit (AHIP) and actions were in accordance with the AHIP; that due diligence was exercised in relation to Aboriginal object/s; and/or that the activity was classified as low impact.

Under Section 89A, an Aboriginal object must be reported to Heritage NSW within a reasonable timeframe unless they have previously been recorded and submitted to the Aboriginal Heritage Information Management System (AHIMS). Penalties for failure to report an Aboriginal object start from \$16,500 for individuals and \$33,000 for corporations.

2.2 National Parks and Wildlife Regulation 2019

This Regulation provides a framework for exercising due diligence and outlines codes of practice in respect to Aboriginal objects (Section 57), as well as defences for carrying out certain low-impact

activities (Section 58). The Regulation also outlines requirements for Aboriginal consultation (Section 60), particularly in relation to an Aboriginal Heritage Impact Permit. Under the Regulation, the following codes of practice are recognised, amongst others:

- *Due Diligence Code of Practice for the Protection of Aboriginal Objects in NSW* (DECCW 2010b),
- *NSW Minerals Industry Due Diligence Code of Practice for the Protection of Aboriginal Objects* (NSW Minerals Council 2010), and
- *Code of Practice for Archaeological Investigation of Aboriginal objects in NSW* (DECCW 2010a).

2.3 Aboriginal Land Rights Act 1983 (NSW)

This Act provides land rights to Aboriginal people through the Local Aboriginal Land Councils. It details a process for claiming unused Crown Land in NSW and for enabling land use. It also allows for agreements to permit traditional hunting, fishing and gathering.

2.4 Environmental Planning and Assessment Act 1979

The Environmental Planning and Assessment (EP&A) Act provides triggers for undertaking environmental and heritage assessments as part of the wider land-use planning framework. This Act has three main parts of direct relevance to Aboriginal cultural heritage. Namely, Part 3 which governs the preparation of planning instruments, Part 4 which relates to development assessment provisions for local government (consent) authorities and Part 5 which relates to activity approvals by governing (determining) authorities. Planning decisions within Local Government Areas (LGAs) are guided by Local Environmental Plans (LEPs). Each LGA is required to develop and maintain an LEP that includes Aboriginal and historical heritage items which are protected under the EP&A Act and the NPW Act.

The Project Area is located within the Newcastle LGA and falls under the Newcastle LEP.

2.5 Newcastle Local Environmental Plan 2012

The Newcastle LEP 2012 requires development consent to demolish, disturb, excavate or develop land on which an Aboriginal object is located or that is within an Aboriginal place of significance. Council must consider the effect of a proposal on an Aboriginal Place and any Aboriginal object located within an area of works. Council must inform the local Aboriginal community about the application where impacts to Aboriginal cultural heritage may occur. Protected heritage under the LEP is listed in Schedule 5.

There are no Aboriginal heritage items in the Project Area on Schedule 5 of the Newcastle LEP.

3 Aboriginal Consultation

This section outlines the previous Aboriginal consultation that has been undertaken as part of the approval process and the consultation undertaken for this Aboriginal Cultural Heritage Management Sub-Plan.

3.1 Background

Aboriginal consultation was undertaken for the Aboriginal Cultural Heritage Assessment report as well as for Designing with Country (Connecting to Country) in 2021.

Aboriginal Consultation for the Aboriginal Cultural Heritage Assessment report in accordance with the *Aboriginal Cultural Heritage Consultation Requirements for Proponents* (OEH, formerly DECCW 2010b). As part of this process 13 Aboriginal organisations and individual were added as Registered Aboriginal Parties (RAPs) for the project (Table 2). Consultation with these RAPs is to be continued throughout the project.

The Designing with Country was undertaken in accordance with the Government Architect NSW principles (Government Architect NSW 2020) and is documented in the ACHA report (Heritage Now 2021).

Table 2. Registered Aboriginal Parties

Organisation	Representative Name
A1 Indigenous Services	Carolyn Hickey
Awabakal Descendants Traditional Owners Aboriginal Corporation	Peter Leven Shane Frost
Awabakal & Guringai Pty Ltd	Tracey Howie
Individual	Trudy Smith
Awabakal Local Aboriginal Land Council	Peter Townsend
Awabakal Traditional Owners Aboriginal Corporation	Kerrie Brauer
Didge Ngunawal Clan	Paul Boyd and Lilly Carroll
Jarban & Mugrebea	Les Atkinson
Lower Hunter Aboriginal Incorporated	David Ahoy
Worimi Guringai Lands	Robert Syron
Yinarr Cultural Services	Kathleen Steward Kinchela
Individual	Olivia Connors
Amanda Hickey Cultural Services	Amanda Hickey

Organisation	Representative Name
Confidential RAP 1	Confidential RAP 1
Confidential RAP 2	Confidential RAP 2

3.2 Aboriginal Consultation Undertaken for this Sub-Plan

This plan was sent to the RAPs by email on 5/7/2023 with 28 days allowed for feedback. No feedback was received from this mail out. Subsequent to this request for feedback by email, all RAPs were contacted via phone on 11/9/2023 as detailed in the consultation log in Appendix 1. Two verbal responses agreeing to the contents of the Aboriginal Cultural Heritage Sub-Plan and the contained excavation methodology were received and were documented by email, as per Appendix 1. In addition, five responses to the invitation to tender for fieldwork as part of the heritage management of the Project Area were received. Contents of the tender responses are commercial in-confidence and therefore are not contained in the consultation documentation compilation, however, the responses have been documented in the consultation log in Appendix 1. In addition, the RAPs were consulted on the 5th and 6th of October, 2023 in respect to the updated ACHMSP, also documented in Appendix 1. The preference was for any salvaged Aboriginal material to remain in the Project Area in a protected location.

3.3 Further Aboriginal Consultation for future works

Section 7 outlines the RAP roles in the future works for the project.

4 Heritage Background

Previous archaeological excavations in the Newcastle have revealed deep sandsheets and Aboriginal sites dating to over 9,600 years before present. Archaeological excavations of the former ‘Palais Royale’ site at 684 Hunter Street resulted in recorded Aboriginal occupation dates of approximately 6,716 years before present (AHMS 2011), while a salvage excavation from Hannell Street in Wickham revealed dates of approximately 9,600 years as well as evidence of continuous occupation over a 7,000-year period (Artefact Heritage 2016). The Aboriginal artefacts in these sites were up to 3.5 m below ground surface, and often artefactual layers did not start until over a metre below ground surface and therefore required shoring or stepping back to investigate the archaeological deposit at that depth. Fill layers often also had to be removed. These sites have very high local significance.

A summary table comparing Aboriginal site features from excavated sites in Newcastle is provided in Appendix 2. Sites in the Newcastle area can be categorised as having low, moderate, or high artefact densities based on the average number of artefacts per square metre excavated:

Artefact Density	Number of Artefacts/m ²
Low	<20
Moderate	20-200
High	>200

Generally, moderate-high artefact densities have been recovered from areas interpreted as longer term camp sites or resource acquisition and processing sites, a number which contain evidence of multiple events or periods of Aboriginal occupation over time. Low artefact densities are associated with short term camp sites.

Lithic assemblages are dominated by tuff / chert / indurated mudstone tuff (IMT) (likely from nearby coastal sources at Nobbys Head and Mereweather Beach), followed by silcrete, with a large variety of other material present in small quantities including quartz, rhyolite, fine grained silicious (FGS), chalcedony, quartzite, sandstone, volcanic, ignimbrite, mudstone, petrified wood, flint, and glass. The composition of the assemblages shows evidence for the manufacture of both flakes and tools. The sites contain a relatively large number of complete flakes and broken flakes proportional to the rest of the assemblage, and relatively few cores and tools. Less frequently occurring tool types include grindstones, hammerstones, anvils, pebble (chopping) tools, and retouched and backed artefacts. Where midden material is present, the most abundant shellfish species identified are cockle (*Anadara* sp.), oyster (*Saccostrea* sp.) and Hercules club whelk (*Pyrazus ebeninus*), which are all known to occur in the Hunter River estuary.

The Project Area is located approximately 830 m from Bar Beach and would have originally been part of the coastal dune system. A former tributary of Cottage Creek flowed through the Project Area (Figure 2 and Figure 3) and out to the Hunter River. No surface Aboriginal sites were identified during the archaeological survey, but this is likely due to low ground surface exposure and visibility as well as the amount of fill which was used to build up the ground surface. However, there is high potential for Potential Archaeological Deposit/s (PAD) to be present in the Project Area beneath layers of fill due to its proximity to an old creek line. This has been identified as HN-PW-PAD01.

Further information is contained within the ACHA report (Heritage Now 2021).

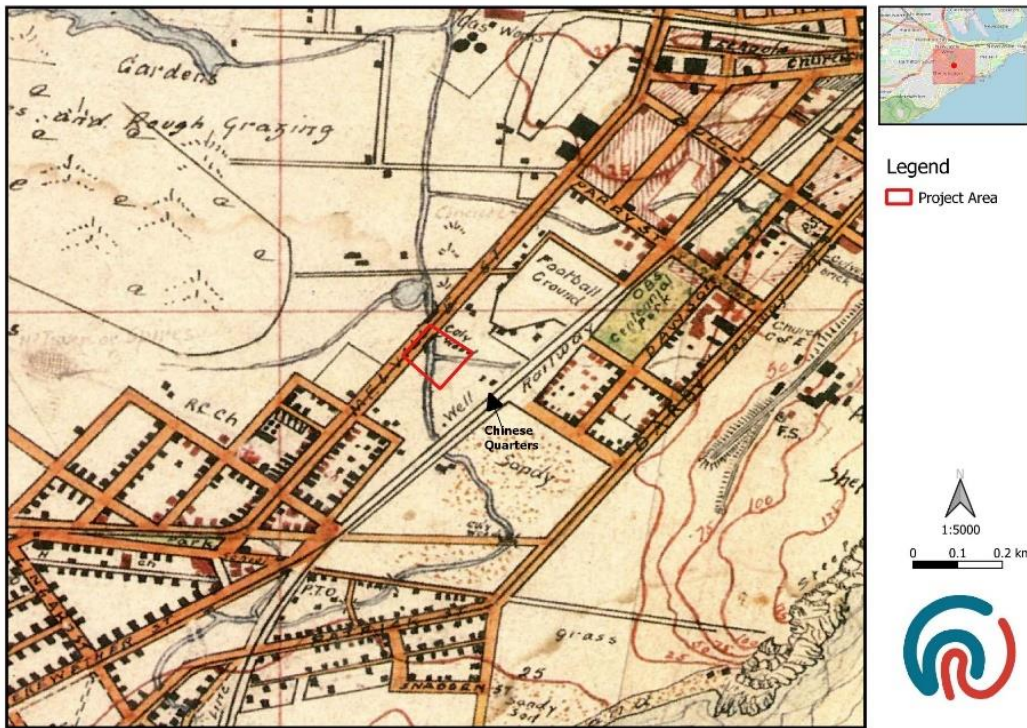





Figure 2. Detail of 1910 Map of Newcastle showing location of Project Area and former creek line




Legend

-  Project Area
-  Creeks/Rivers
-  Water Bodies

AHIMS Sites

-  Aboriginal Ceremony and Dreaming
-  Artefact Scatter
-  Artefact/s

-  Grinding Groove
-  Isolated Find
-  Midden
-  Ochre Quarry + Artefact/s
-  PAD
-  PAD + Midden

-  PAD + Midden + Artefact Scatter
- AHIMS Status**
-  Salvaged/Destroyed
-  Partially Salvaged/Destroyed
-  Not a Site

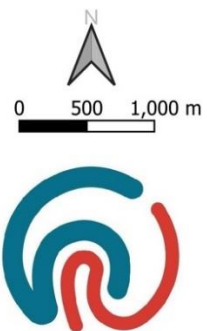


Figure 3. Project Area and AHIMS Sites

5 Impact Assessment

This section provides background on the potential impacts to archaeology based on the project works as well as how to manage the archaeological resource.

The Proposal is to:

- Increase student numbers from 256-480
- Demolition of blocks C, D and F (none of these buildings have basements and would be demolished to ground level)
- Construction of a three-storey building with rooftop and undercroft play areas (known as the Union Street building)
- Refurbishment of block/building B for use as administration spaces, staff rooms and offices
- Construction of a one-way road adjacent to the northern boundary of the site to provide a student drop-off/pick-up area
- Stormwater and service upgrades
- Site landscaping

The main below ground disturbance will be from the pile caps, concrete piling and lift pit (Figure 4 and Figure 5). There will be approximately 55 piling locations. Of these, approximately 34 piles will be under strip footings 0.3m in depth. With the remaining being individual pile caps, which will typically be 1.2 m x 1.2 m in dimensions and 0.8 m deep. The concrete piles will be over 30 metres deep. The lift pit will be approximately 2.4 m x 2.4 m in dimensions and 2.15 m in depth. The stormwater drain will be 0.9 m wide and 0.9 m in depth (Figure 7). The piling placement has been determined to support the structure. One RAP representative identified that the piling may displace artefacts, while this is correct (if present), there is little scope to change the building design. The mitigation of this impact will be offset by the archaeological work carried out on site including targeting pile locations for test excavation, followed by salvage excavation (if warranted). These ground disturbing works will occur at discrete locations over an area of approximately 60m x 40 m (2400 square metres). However, it is noted that there is a 25 x 25 m area (625 square metres) which is a highly contaminated area (Section 5.1) and is not to be disturbed. Room to accommodate site facilities and access is approximately 400 square metres). In addition, there is approximately 220 square metre area of trees for which the underlying roots would impede archaeological excavation. Thus the site area which can be accessed is approximately 1155 square metres.

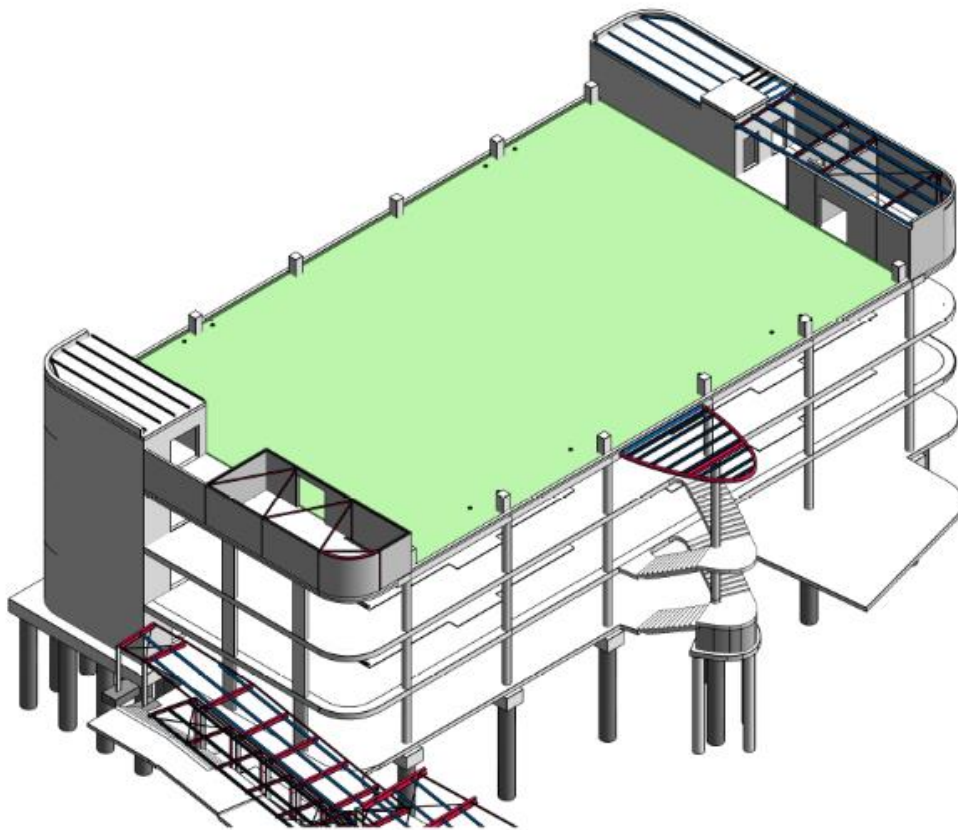


Figure 4. Hatch Coversheet from 367874-H-00-DR-S-0001 Revision P02

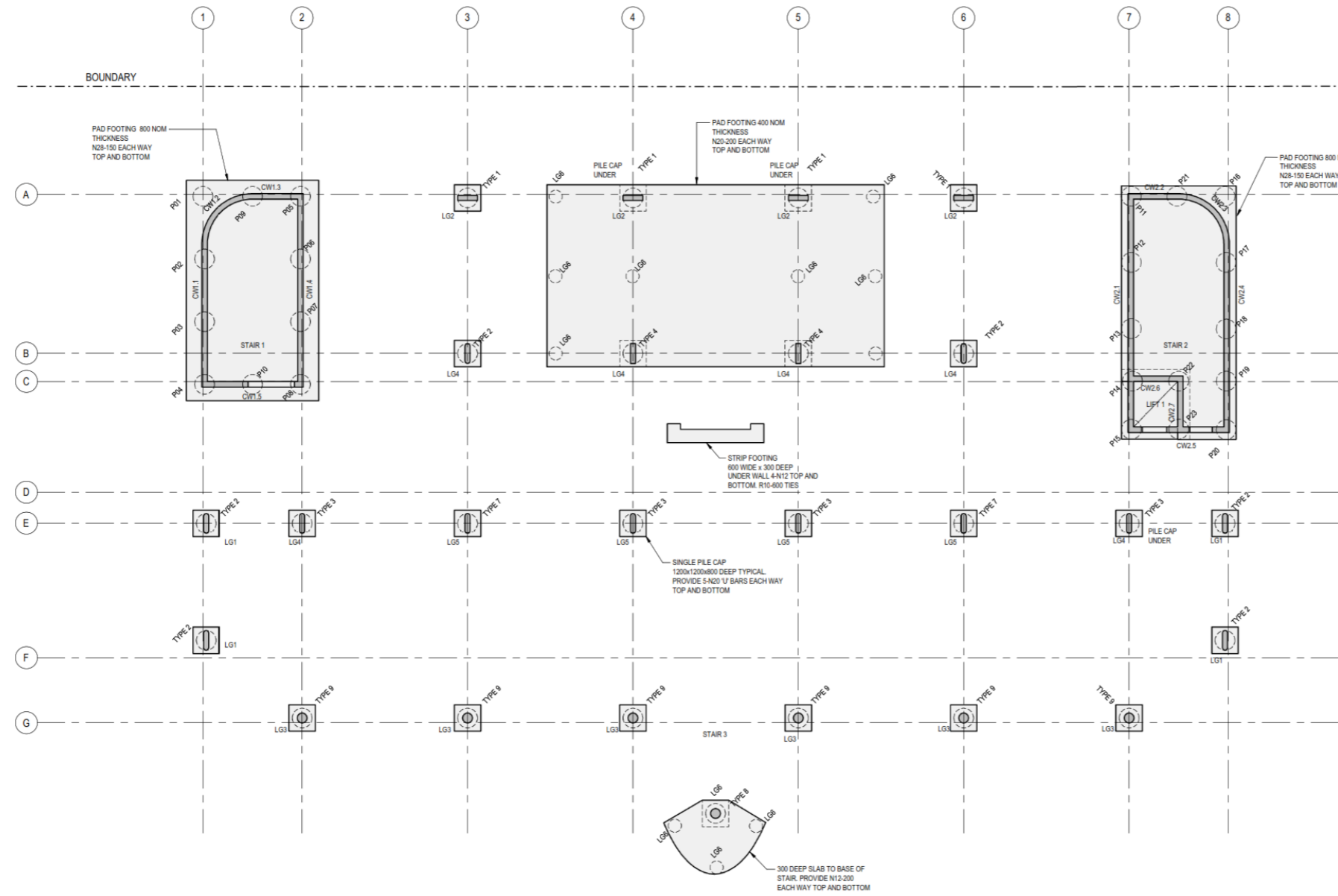
This drawing is copyright and the property of Hatch Design Consulting Engineers Pty Limited and must not be copied or used without the consent of the company.



PROJECT
NEWCASTLE GRAMMAR SCHOOL
PARK CAMPUS STAGE 1

CLIENT
NEWCASTLE GRAMMAR SCHOOL

THIS DRAWING CONTAINS COLOURED INFORMATION



NOTES:

- FOR DRAWING LIST REFER TO DRAWING 00-DR-S-0001.
- FOR CONSTRUCTION NOTES REFER TO DRAWINGS 00-DR-S-0002, 00-DR-S-0003.
- FOR BUILDING LEVELS, SETOUT & DIMENSIONS INCLUDING HOBS, SETDOWNS, FALLS AND SMALL PENETRATION (NSOP) REFER TO ARCHITECT'S DRAWINGS.
- WATERPROOFING TO ARCHITECT'S DETAILS.
- DRAINAGE TO HYDRAULIC ENGINEERS DETAILS.

LEGEND:

- REINFORCED CONCRETE COLUMN / WALL
- CONCRETE STRUCTURE UNDER
- REINFORCED / POST-TENSIONED CONCRETE STRUCTURE
- CONCRETE COLUMN TYPE, REFER TO DETAILS ON DRAWING 01-DR-S-0301
- CONCRETE STAIR, REFER TO STAIR ELEVATIONS AND DETAILS ON 500 SERIES DRAWINGS
- LG# DENOTES COLUMN LOADING GROUP. REFER TO TABLE BELOW

MINE SUBSIDENCE DESIGN VALUES	
• EAST / WEST - TENSILE STRAINS ARE 2mm/m	
• EAST / WEST - MAX RADIUS OF CURVATURE AT LINE OF BUILDING 10m	
• NORTH / SOUTH - TENSILE STRAINS LESS THAN 1.5mm/m	
• NORTH / SOUTH - MAX RADIUS OF CURVATURE AT LINE OF BUILDING 13m	
• MAXIMUM SUBSIDENCE 50-80mm	
• MAXIMUM TILT 0.5 - 2.5 mm/m	
• MAXIMUM LATERAL GROUND MOVEMENT = 12mm	

ABOVE VALUES ARE SUBJECT TO THE IMPLEMENTATION OF THE 25% PEAK STRENGTH - OPTION 2 MINE GROUTING PLAN BY TETRATEDCH

PILE LOADS UNDER WALL GROUPS			
Mark	PILE LOADING		
	MAX SHEAR	MAX COMPRESSION	MAX TENSION
STAIR 1			
P01	1007	4301	-3324
P02	838	3346	-2368
P03	838	3346	-2368
P04	1007	4301	-3324
P05	1007	4301	-3324
P06	838	3346	-2368
P07	838	3346	-2368
P08	1007	4301	-3324
P09	904	2530	-1687
P10	904	2530	-1687

ISOLATED PILE LOAD GROUP			
TAG	MAXIMUM AXIAL LOAD (kN)		
	DEAD LOAD (G)	LIVE LOAD (Q)	ULTIMATE
	LG1	610	320
LG2	800	300	1320
LG3	1200	470	1800
LG4	1450	1500	2630
LG5	1685	1500	3000
LG6	300	180	600

NOTE:
ALL PILES LOCATED:
- ALONG GRID LINES E, F AND G; AND
- UNDER FEATURE STAIR BELOW GRID G AND BETWEEN GRIDS 4 AND 5.
ARE TO BE DESIGNED WITH A MINIMUM ULTIMATE MOMENT OF 600Nm. THIS IS TO ACCOMMODATE EXPECTED GROUND MOVEMENTS DURING A MINE SUBSIDENCE EVENT.

PILE LOADS UNDER WALL GROUPS			
Mark	PILE LOADING		
	MAX SHEAR	MAX COMPRESSION	MAX TENSION
STAIR 2			
P11	964	3762	-2844
P12	801	3287	-2369
P13	661	2844	-1919
P14	778	3214	-2206
P15	938	3689	-2771
P16	964	3762	-2844
P17	801	3287	-2369
P18	661	2844	-1919
P19	778	3214	-2206
P20	938	3689	-2771
P21	884	2226	-1459
P22	676	1214	-436
P23	855	2091	-1322

P03	14.11.22	ISSUED FOR TENDER	K.K	P.F
P02	12.10.22	MINE SUBSIDENCE NOTE ADDED	K.K	P.F
P01	16.09.22	ISSUED FOR TENDER	K.K	P.F
REV	DATE	DESCRIPTION	DRN	APP
TITLE				

FOOTING PLAN			
DOCUMENT STATUS			SHEET SIZE
FOR TENDER			A1
DRAWN	DESIGNED	APPROVED	SCALE
J.Knight	T.Shakespeare	P.Forder	1:100
DOCUMENT No:	LD REF: 16194	REVISION	

NOT FOR CONSTRUCTION 367874-H-01-DR-S-0200 P03

14/10/22 1:33:38 PM PLOTTED

Figure 5. Hatch 367874-H-01-DR-S-0200 Revision P03

5.1 Geotechnical and Contamination Information

A geotechnical report was prepared for the Project Area which identified contamination and fill layers (Tetra Tech Coffey 2023). This report was produced after the preparation of the Aboriginal Cultural Heritage Assessment (Heritage Now 2021) for the Project Area.

The geotechnical definition of fill does not always correlate to an archaeological definition of fill and there are examples of intact Aboriginal sites having been identified in areas which were identified as geotechnical fill layers. However, the geotechnical testing has identified coal ash fill at depths of 0.25 m below ground surface up to 0.6 m below ground surface (Table 3). This is based on 18 boreholes undertaken by Tetra Tech Coffey (2023 Appendix C). Laboratory testing has identified this as Polycyclic aromatic hydrocarbons (PAHs) contamination of the site and is in such high levels in the centre of the site that it is not safe to be subject to archaeological hand excavation (Figure 6). The geotechnical testing has also identified that the water table is present at 1.4 -1.8 metres below ground surface (Tetra Tech Coffey 2023, 4). Boreholes DS14, DS15 and DS17 are north of the contaminated hotspot, but still have coal ash fill to 0.5 m below ground surface. Boreholes DS11, DS12 are south of the contaminated hotspot but still have coal ash present to depths of 0.4 m – 0.5 m below ground surface. Borehole DS18 had coal ash down to at least 1.0 m (where the borehole terminated). Based on these results there is potential for approximately 0.9 m – 1.4 m of intact archaeological deposit to be present below the depth of coal ash fill and the water table (with this varying according to location across the site).

Table 3. Geotechnical Results summary, note the fill references in this table relate to geotechnical fill and this definition does not always align with an archaeological definition of fill.

Geotechnical Test Location	Description
DS01	0-0.05 m – Topsoil and grass 0.05m – 0.3m – fine to coarse brown sand 0.3m-0.6m – fine to coarse sand with traces of ash identified as coal ash fill 0.6-1.0m – fine to medium grained sandy clay with medium plasticity Borehole terminated at 1.0 m
DS02	0-0.05 m – Topsoil and grass 0.05m – 0.25m – fine to coarse brown sand 0.25m-0.45m – fine to medium grained sand with traces of ash identified as coal ash fill 0.45-0.8m – fine to medium grained sandy clay with low plasticity 0.8-1.0 m – fine sandy clay Borehole terminated at 1.0 m
DS03	0-0.05 m – Topsoil and grass 0.05m – 0.35m – fine to coarse brown sand 0.35m-0.45m – fine to medium grained sand with traces of ash identified as coal ash fill 0.35-0.7m – fine to medium grained clayey sand – brown/grey 0.7-1.0 m – fine to medium grained clayey sand – yellow/brown Borehole terminated at 1.0 m
DS04	0-0.05 m – Topsoil and grass 0.05m – 0.35m – fine to coarse brown sand 0.35m-0.45m – fine to medium grained sand with traces of ash identified as coal ash fill

Geotechnical Test Location	Description
	0.35-0.7m – fine to medium grained clayey sand – brown/grey 0.7-1.0 m – fine to medium grained clayey sand – yellow/brown Borehole terminated at 1.0 m
DS05	0-0.05 m – Topsoil and grass 0.05m – 0.3m – fine to coarse brown gravelly sand 0.3m-0.4m – fine to medium grained sand, black soil staining with traces of ash identified as coal ash fill 0.4-0.8m – fine to medium grained clayey sand – brown 0.7-1.0 m – fine to medium grained clayey sand – pale brown Borehole terminated at 1.0 m
DS06	0-0.05 m – Topsoil and grass 0.05m – 0.3m – fine to medium brown gravelly sand 0.3m-0.6 m – fine to medium grained dark brown sand 0.6-1.0 m – pale brown sandy clay Borehole terminated at 1.0m While there was no coal ash fill observed, PAHs were detected in laboratory testing
DS07	0-0.05 m – Topsoil and grass 0.05 m – 0.25 m – fine to medium brown gravelly sand 0.25 m-0.5 m – fine to medium grained sand, black soil staining with traces of ash identified as coal ash fill Borehole terminated at 0.5 m
DS08	0-0.05 m – Topsoil and grass 0.05m – 0.2 m – fine to medium black gravelly sand 0.2m-0.4m – fine to medium grained sand with traces of ash identified as coal ash fill 0.35-0.7 m – fine grained black sand 0.7-0.85 m – fine to medium grained clayey sand – yellow 0.85-1.0 m – fine to medium yellow sand Borehole terminated at 1.0 m
DS09	0-0.05 m – Topsoil and grass 0.05m – 0.2 m – fine dark brown sandy gravel 0.2 - 0.8 m – fine grained pale brown medium sandy clay (low plasticity) 0.8 m – 1.0 m low to medium plasticity orange clay Borehole terminated at 1.0 m
DS10	0-0.05 m – Topsoil and grass 0.05m – 0.3 m – fine to coarse sandy gravel - brown 0.2 - 0.6 m – gravelly sand with black soil staining and traces of coal ash 0.6 m – 1.0 m – sandy clay, black fine to medium sand Borehole terminated at 1.0 m
DS11	0-0.05 m – Topsoil and grass 0.05-0.3 m – sandy gravel, brown fine to coarse sand 0.3-0.5 m – gravelly sand with black soil staining and traces of coal ash 0.5 – 1.0 m – clayey sand, Borehole terminated at 1.0 m
DS12	0-0.05 m – Topsoil and grass 0.05-0.25 m – clayey sand, brown fine to medium sand 0.25-0.4 m – gravelly sand with black soil staining and traces of coal ash

Geotechnical Test Location	Description
	0.4-0.8 m – clayey gravelly sand, brown fine to medium sand 0.8-1.0 m – sandy clay – fine to medium sand Borehole terminated at 1.0 m
DS13	0-0.05 m – Topsoil and grass 0.05-0.2 m – fine to medium brown sand 0.2-0.45 m – fine to coarse gravel with concrete fragment observed 0.45-0.7 m – sandy clay, low plasticity, brown fine to medium sand Borehole terminated at 0.7m
DS14	0-0.05 m – Topsoil and grass 0.05-0.15 m – fine to medium brown sand 0.15-0.3 m – clayey sand, low plasticity, brown/dark brown fine to medium sand 0.3-0.5 m gravelly sand with black soil staining and traces of coal ash Borehole terminated at 0.6 m
DS15	0-0.05 m – Topsoil and grass 0.05-0.2 m – fine to medium brown sand 0.2-0.5 m – gravelly sand with black soil staining and traces of coal ash 0.5-0.8 m – brown/yellow clayey sand, fine to medium Borehole terminated at 0.8 m
DS16	0-0.05 m – Topsoil and grass 0.05-0.2 m – fine to medium brown sand 0.2-0.5 m – gravelly sand with black soil staining and traces of coal ash 0.5-0.8 m – brown/yellow clayey sand, fine to medium Borehole terminated at 0.8 m
DS17	0-0.05 m – Topsoil and grass 0.05-0.3 m – clayey sand, low plasticity, fine to medium brown/pale brown sand 0.3-0.5 m – gravelly sand with black soil staining and traces of coal ash 0.5-1.0 m – low plasticity brown/mottled orange clay Borehole terminated at 1.0 m
DS18	0-0.05 m – Topsoil and grass 0.05-0.35 m – sandy gravel, find to coarse cobbles/boulders and dark brown fine to medium sand 0.35-1.0 m – gravelly sand with black soil staining and traces of coal ash Borehole terminated at 1.0 m



Figure 6 Contamination hotspot – not to be subject to archaeological excavation

6 Management of Archaeological Resource

The management of archaeological resource includes sub-surface investigation and salvage based on archaeological potential as well as contingencies for unexpected finds.

6.1 Research Questions and Aims

The following research questions have been developed based on archaeological information from other similar excavations in the Newcastle area.

Research Questions

Based on previous archaeological work the following research questions are posed:

- Does the Project Area have sand deposit similar to other sites in the Newcastle locality and what information does it provide regarding the antiquity of the deposit?
- How does occupation of the Project Area compare to the surrounding archaeological sites in terms of the artefact assemblage, and can inferences be made about the type of occupation (for instance base camps, transit camps or other special activity areas)?
- Does the site provide information on the ancient environment and has this changed over time?

6.1.1 Aims of the Test Excavation

The aim of the test excavation is to determine the 1) presence or absence of an archaeological site. If an archaeological site is present the following information is also sought 2) to identify degree of disturbance to the archaeological site, 3) to identify the spatial extent of the intact portions of the archaeological site, 4) to determine the depth of the archaeological site (if possible, depending on safety, water table and other factors), 5) to characterise the nature (features) and analyse the contents, of the archaeological site (such as stone artefact types and materials, shellfish species) to gain an understanding of site formation processes; resource exploitation; and identify any changes in type of occupation over time (as well as comparison to material from other Newcastle excavations summarised in Appendix 2), 6) to determine if the test excavation results are adequate for addressing the research questions and extent of proposed ground disturbance from the development and thus whether salvage excavation is needed. If an archaeological site is not present then the test excavation results need to be documented to provide record of the investigations and an interpretation of the area.

6.1.2 Aims of a Salvage Excavation

The aim of the salvage excavation is to excavate an archaeological sample that is adequate for addressing the research questions and responds to the extent of ground disturbance that will result from the proposed development. It may also need to identify the depth and extent of the archaeological site, should a greater sample be needed above what was done during the test excavation. It may also need to further characterise the nature and contents of the archaeological site.

6.2 Sub-surface excavation methods

This section outlines the sampling and sub-surface archaeological excavation methods to be used for the testing as well as triggers for salvage.

6.2.1 Spatial Sample for Test Excavation

The archaeological units will target the pile locations as these will have the greatest depth impact on underlying sediment. The placement of these archaeological units will avoid the highly contaminated area (hotspot), areas with deep coal ash e.g. DS18 and the area of trees, where tree roots will impede the archaeological excavation. Six initial test pits will sample the extent of the proposed pile locations, with up to four additional test pits distributed between these locations. Locations are indicative only and may be changed in the field in consultation with the RAPs (Figure 7).

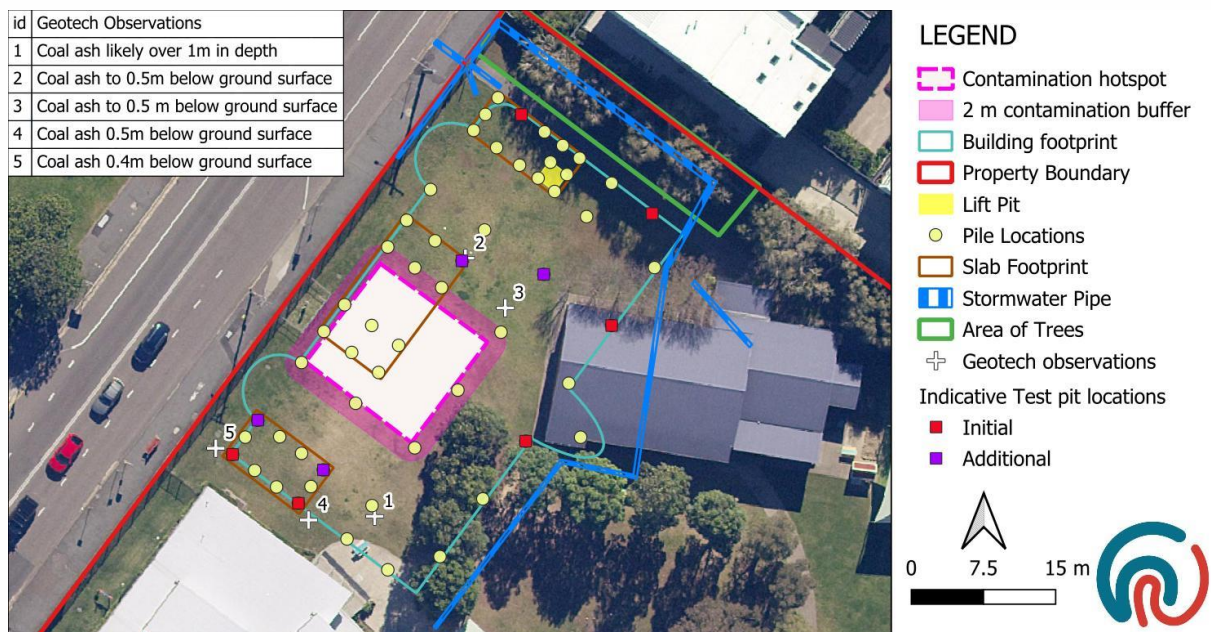


Figure 7 Indicative test pits for excavation (avoiding areas of contamination and trees)

6.2.2 Triggers for Salvage Excavation

The triggers for salvage excavation have taken into account the relevant archaeological excavations in the Newcastle area (Appendix 2) and will be based on the results of the test excavation for the purposes of excavating an archaeological sample that is adequate for addressing the research questions and responds to the extent of ground disturbance that will result from the proposed development, but only if it is safe and feasible to do so. Triggers for salvage may include a greater sample if needed to identify the extent and depth of the archaeological deposit and/or sample units consecutively to identify intra-site spatial patterning or to fully investigate and document features that were unable to be recovered under the test excavation sampling or field methods. For instance, a midden which extended outside the test excavation sample area or was too deep to reach using text excavation methods. Triggers for salvage may also include:

- areas where moderate-high average densities of artefacts are identified ($>20/m^2$) (this density trigger is based on previous Newcastle excavations summarised in Appendix 2),

- presence of unusual artefacts and/or presence of different material types, compared to the lithic assemblages of other excavated sites in Newcastle, which are dominated by flakes/broken flakes and tuff/chert/IMT (see Section 4 and Appendix 2),
- identification of significant archaeological features, such as hearths or midden material,
- evidence of intact deep, stratified deposits relative to other portions of the site and/or similar in comparison to other excavated sites in Newcastle that have been dated to the Early to Late Holocene, and likely to indicate repeated visitation or use of the site over time by Aboriginal people.

6.2.3 Archaeological unit (pits and trenches)

Archaeological units will be 0.5m x 0.5 m to 1.0 m x 1.0 m for the purposes of testing presence or absence of artefacts and archaeological unit size will be selected according to field conditions, in consultation with the RAPs.

For hand excavation areas, the deposit is to be excavated in spits of 50mm to 100 mm as dictated by field conditions, but stratigraphic sampling may be used if appropriate to the archaeological context. Sampling of soils or charcoal for the purposes of environmental dating will be taken where it will assist in interpreting the site.

If fill layers are identified, these may be stripped back by machine, as per Section 6.2.5.

6.2.4 Excavation hand field methods and sieving

The units will be hand excavated unless it has been identified the soil is fill, contaminated or otherwise unsafe to excavate by hand. Hand excavation methods will involve shovel and trowel techniques with sediment being collected in labelled bucket. The deposit will then be screen sieved to retrieve artefacts. Artefacts will be extracted by hand and placed in labelled bags corresponding to the archaeological spits. Dry or wet sieving methods will be used depending on the nature of the sediment extracted. A 5mm sieve aperture will be used unless there is an archaeological reason to undertake sample sieving with a 3mm sieve.

6.2.5 Excavation mechanical methods and installation of shoring

The geotechnical report (Tetra Tech Coffey 2023) identified coal ash at 0.4m to 0.5 below ground surface. Where it is safe to do so, a 0.5 m x 0.5 m test pit will be hand excavated with shovels to confirm the depth of coal ash fill and once this has been identified, the fill will be removed by machine, a sample of this may also be sieved (if safe enough to do so). The extent of fill to be removed will depend on the intended sample location size, for instance a 1 m x 1 m archaeological unit may require clearing a buffer of 2 metres on either side of that unit, depending on the anticipated need for benching or shoring and thus may be 3m x 3m in dimensions. Benching or shoring methods may be used depending on the suitability, field conditions and in consultation with the RAPs.

If it is a set of contiguous sample locations such as a 2 m x 2 m pit made up of four 1 m x 1m excavation squares then the benching area may increase to 4 m x 4 m. Any mechanical methods of excavation will be supervised by an archaeologist. The archaeological units will be excavated manually when safe to do so, however, if excavation is required below safe working depths then excavation may be conducted mechanically, with vertical controls in place and appropriate to sampling conditions.

In some instances, shoring will be needed to achieve archaeological excavation at depth. Shoring panels come in standard sizes and cannot be adjusted to fit a particular pit size. Shoring panels will be selected according to the intended archaeological unit size for instance a 1 m x 1 m square or 1 m x 2 m trench, or 2 m x 2 m trench. The shoring panel size which most closely fits the archaeological unit size will be selected to ensure minimal disturbance. However, it is noted that all shoring installations will involve soil disturbance from displacing the soil around the shoring unit and depending on panel sizes available this is generally 0.5 m, but may be up to 1.5 depending on availability of panels and site conditions. The tamping down of the panels by machine can also cause vibration with the archaeological trench.

6.2.6 Methods for excavation of features

The excavation of archaeological features will be tailored to type of feature, its size, compaction, materials and other field factors. Archaeological features which may be encountered include hearths and middens, amongst others.

A hearth feature may be indicated by the presence of charcoal, where charcoal is encountered, the area will be cleaned back by hand with a trowel and brush to identify if the charcoal is consolidated in the form a hearth and if there are any heat retainer stones in association with the charcoal. A plan of the hearth will be drawn and feature photographed. The feature will also be sectioned to provide an understanding of the depth and vertical distribution of the feature, but also to allow for sampling of datable sediments or materials.

The presence of shell may indicate the presence of a midden. If shell is encountered, shovel excavation will be replaced by trowel and brush excavation methods. If the extent of the feature is demarcated within the trench then a plan of the midden will be drawn and photographed. The feature may be sectioned if understanding of depth and vertical distribution is needed and/or to allow for the sampling of datable sediments or materials.

If midden extends across the entire trench then it will be photographically documented. Depending on field conditions a smaller section of the trench may be excavated to reveal the depth and vertical characteristics of the midden and/or to allow for the sampling of datable sediments or materials.

Where a feature extends beyond the walls of a trench the consideration of the context and significance of the feature will be considered. In some instances, further sampling of the feature may be needed and will involve extending the trench. Before this takes place, the feature will be protected with geofabric or similar and the surround walls stabilised to ensure the trench extension will not impact the feature. The trench extension will be undertaken in spit increments as per the standard excavation methods until the feature is reached and then the other portion of the feature will be treated as per the methods for excavating features.

The excavation of features other than hearth and midden will adopt the same principles of the above, but will be tailored to the field conditions as well as the type of feature, its size, compaction and materials.

6.3 Artefact Curation, Storage, Recording and Analysis

During the course of the excavation, Aboriginal objects and archaeological/environmental samples will be kept in a sealed storage container at the Newcastle Grammar School - Park Campus in a secure, temporary site office.

Following the excavation, Aboriginal objects and archaeological/environmental samples will be temporarily stored in a sealed storage container at the Heritage Now Pty Ltd office (at either 1/48 Kalaroo Road, Redhead NSW or 275 Stanmore Road, Petersham NSW). Subsequent analysis by a relevant technical specialist will be undertaken at the Heritage Now Pty Ltd office or the laboratory/place of business of the technical specialist.

Once analysed and documented, options for the disposition of Aboriginal objects include reburial on site or a Care Agreement for the permanent storage of archaeological material under section 85A(1)(c) of the *National Parks and Wildlife Act 1974* (NPW Act). The final disposition of the Aboriginal objects will be determined following the completion of the project works, in consultation with the RAPs.

6.3.1 Stone artefact recording

The minimum attributes for stone artefact recording are set out in (Table 4). Generally, each artefact will be recorded and measured individually, however in instances where there are very small pieces of debitage or small artefacts such as backing flakes these may be grouped, counted and weighed according to artefact raw material and type. The additional stone artefact attributes (Table 5) will be selected according to the nature of the assemblage and the research questions.

Table 4. Minimum flaked stone attributes

Attribute	Description
Raw Material	Stone raw material of the artefact will be identified
Cortex	The presence/absence of cortex will be recorded (and in some cases percentage of cortex)
Artefact Type	The artefact type will be identified, for flaked artefacts this may include, flake, core or specialised tool type
Completeness	The completeness of the artefact will be recorded as complete/incomplete and in the case of flakes may be recorded as proximal, medial, distal, cone-split or flaked piece (in instances where the former cannot be identified).

Table 5. Additional stone artefact attributes which may be used

Attribute	Description
Length	For flakes this would be the maximum length from the point of percussion at a right angles to the platform to the distal end, for other artefacts it would be the maximum length. Measured in mm or by grouped size analysis.
Width	For flakes this would be the measurement taken from the middle of the percussion access as measured from the point of percussion. For other artefacts it would be the maximum length. Measured in mm or by grouped size analysis.
Thickness	For flakes, thickness of flake would be measured at the intersection of the length and width axis. For other artefacts it would be the maximum thickness. Measured in mm or by grouped size analysis.
Weight	Measured in grams. This may be undertaken on individual artefacts, or grouped small pieces of debitage or small artefacts such as backing flakes.
Flakes	For complete flakes, platform type and termination type will be recorded, or as relevant for broken flakes.
Cores	Additional attributes may include platform orientation, negative flake scars, negative flake scar type.

Attribute	Description
Heat Treatment	For certain raw materials, for instance silcrete, heat treatment lustre may be recorded, where it will contribute to the overall analysis.
Water rolling	Presence or absence of water rolling

6.3.2 Shell and Bone recording

Shell and bone will be sorted and identified to species (or family) level where diagnostic features allow, with Minimum Number of Individuals (MNI) and weight recorded for each shell species. Evidence of modification (eg. burning/cut marks) and post-depositional processes will be noted, where relevant.

6.3.1 Analysis of archaeological materials

The catalogue records of the stone artefacts, shell and/or bone will be subjected to analysis as appropriate this may include minimum counts, analysis of raw materials, spatial patterning across the site, interpretation of deposits relative to stratigraphy and similar.

6.4 Collection of Artefacts without Archaeological Context

Artefacts identified without archaeological context, surface finds, finds from fill layers, or wall collapse, may be collected for cultural purposes. The position will be recorded by GPS or on the site plan, notes will be taken on their context, and they will be bagged and labelled. However, they will only be subject to detailed analysis if doing so will provide additional archaeological or cultural information.

6.5 Reporting on Archaeological Material

All archaeological work is to be documented to meet the standards under the *Code of Practice for Archaeological Investigation of Aboriginal objects in NSW* (DECCW 2010a) and the *Guide to investigating, assessing and reporting on Aboriginal cultural heritage in NSW* (OEH 2011). Any other archaeological or environmental samples are to be analysed and reported on in relation to the research questions.

6.6 Protocols for Unexpected Finds

If archaeological deposit or finds which are suspected to exceed the threshold value outlined based on the test excavation/salvage results, then works in that area are to stop and the area is to be cordoned off. The Project Manager is to contact the Archaeologist to make an assessment as to whether the material is classed as Aboriginal object/s under the National Parks and Wildlife Act 1974 and advise on the required management and mitigation measures. Works are not to recommence in the cordoned off area until heritage clearance has been given by the Archaeologist and/or the required management and mitigation measures have been implemented.

Where an unexpected Aboriginal object is found, consultation shall be undertaken with the Registered Aboriginal Parties for the Project to identify management and mitigation measures prior to works re-commencing in that area. The protocols for unexpected finds will be dependent upon the results of the archaeological excavation and will be further developed once archaeological excavation of the area has been completed. However, triggers may include the discovery of a new

site type (not identified previously) for instance the discovery of midden, if none was recovered during the test excavation. The discovery of an intact archaeological site if it was not identified during the test excavation. The discovery of material types not identified during the test excavation for instance presence of silcrete artefacts if not identified in the test excavation. Other triggers include discovery of archaeological material that is unexpected or material with higher than expected significance.

6.7 Protocols for Human Remains

The Plan and the Project Approval does not allow the disturbance of human remains. In the very unlikely event that human remains, or suspected human remains, are uncovered during the development, then works in that area are to stop and the area is to be cordoned off. The Project Manager is to contact the NSW Police to establish whether the area is a crime scene. If it is not a crime scene, then Heritage NSW is to be notified via the Environment Line on 131 555, and management measures are to be devised in consultation with the RAPs. Works are not to recommence in the area until the management measures have been implemented.

6.8 Site Induction Protocols and Training

All project personnel are to be made aware of their obligations under the National Parks and Wildlife Act 1974. This includes the implementation of archaeological management in accordance with this Plan as well as protocols for the management of unexpected finds and human remains. This may be done through an on-site induction or other suitable formats. The Registered Aboriginal Parties will be invited to contribute and/or conduct the on-site induction.

6.9 Heritage Interpretation

The Designing with Country process is to continue and is to draw on the information collected in the themes and stories consultation that is documented in the ACHA report. Consultation is to continue with the Registered Aboriginal Parties for the Designing with Country.

7 Roles and Responsibilities and Compliance

This section outlines the roles and responsibilities under this Plan.

7.1 Project Manager

The Project Manager is the person responsible for overseeing the works. They are responsible for communicating the requirements under this Plan to the relevant personnel and ensuring Plan is implemented. They are responsible for maintaining the heritage contact list for those involved in the archaeological works and maintaining the compliance register.

7.2 Archaeologist

The Archaeologist is a qualified professional who is responsible for undertaking and reporting on the archaeological management for the Project.

7.3 Registered Aboriginal Parties

The Registered Aboriginal Parties for the Project are listed in Table 2 on page 6 of this Plan. The Registered Aboriginal Parties are to be consulted for the implementation of this Plan as well as the continued Designing with Country program as part of the Project.

7.1 Contact List and Compliance Register

A heritage contact list is to be maintained by the Project Manager to ensure the relevant individuals and parties are involved in the implementation of this Plan. The Project Manager is also to maintain a register of compliance with this Plan (and the Project Approval conditions) with respect to cultural heritage.

8 References

- AHMS. 2011. "684 Hunter Street, Newcastle - Section 87/90 Aboriginal Heritage Impact Permit #1098622 Excavation Report." SBA Architects Pty Ltd.
- Artefact Heritage. 2016. "Wickham Transport Interchange: Test and Salvage Excavation Report."
- DECCW. 2010a. *Code of Practice for Archaeological Investigation of Aboriginal Objects in NSW*. Department of Environment, Climate Change and Water.
- . 2010b. "Due Diligence Code of Practice for the Protection of Aboriginal Objects in New South Wales." Sydney, NSW: Department of Environment, Climate Change and Water.
- Eco Logical Australia. 2020. "Archaeological Salvage Excavation of 38 Hannell St Newcastle PAD (AHIMS 38-4-1795)." Thirdi 38 Hannell Pty Ltd.
- Government Architect NSW. 2020. "Designing with Country: A Discussion Paper for All Stakeholders in Built Environment Projects That Impact Aboriginal Communities as Well as Their Culture and Heritage."
- Heritage Now. 2021. "Aboriginal Cultural Heritage Assessment Report - Newcastle Grammar School." Report for APP.
- Mary Dallas Consulting Archaeologists. 2004. "Aboriginal Archaeological Test Excavation Report Boardwalk Site Honeysuckle Drive, Newcastle NSW." Stronach Pty Ltd.
- NSW Minerals Council. 2010. "NSW Minerals Industry Due Diligence Code of Practice for the Protection of Aboriginal Objects." NSW Minerals Council Ltd.
- OEH. 2011. *Guide to Investigating, Assessing and Reporting on Aboriginal Cultural Heritage in New South Wales*. Office of Environment and Heritage.
- Tetra Tech Coffey. 2023. "Remediation Action Plan (RAP) Newcastle Grammar School - Park Campus: 127 Union Street, Cooks Hill NSW 754-NTLGE282007-AK REV 2." APP.
- Umwelt (Australia) Pty Ltd. 2020. "Newcastle Light Rail Project – Works Conducted under AHIP C0002170." Downer EDI Works Pty Ltd.

Appendix 1 Aboriginal Consultation

Contact	Organisation	Contacted by	Organisation	Method	Date	Comment/response
Agency Letter						
Sir or Madam	Native Title Services Corp	Raisa Perez	Heritage Now	Email	8/04/2021	
Sir or Madam	Register of Aboriginal Owners	Raisa Perez	Heritage Now	Email	8/04/2021	
Sir or Madam	Heritage NSW	Raisa Perez	Heritage Now	Email	8/04/2021	
CEO	Awabakal Local Aboriginal Land Council	Raisa Perez	Heritage Now	Email	8/04/2021	
Sir or Madam	Newcastle City Council	Raisa Perez	Heritage Now	Email	8/04/2021	
Sir or Madam	Hunter Local Land Services	Raisa Perez	Heritage Now	Email	8/04/2021	
Agency Letter Responses						
Trishia Palconit	Heritage Now	Rosalie Neve	Heritage NSW	Email	12/04/2021	Sent a list of known Aboriginal Parties in Newcastle LGA
Raisa Perez	Heritage Now	Tom Smith	Newcastle City Council	Email	27/04/2021	Listed ALALC as a stakeholder
Newspaper Public Notice						
	Australian Community Media	Tessa Boer-Mah	Heritage Now	Email	12/04/2021	Confirmation that notice was published
Expressions of Interest Letters						
Carolyn Hickey	A1 Indigenous Services	Crystal Phillips	Heritage Now	Email	28/04/2021	
Ashley, Gregory & Adam Sampson	AGA Services	Crystal Phillips	Heritage Now	Email	28/04/2021	
Aliera French	Aliera French Trading	Crystal Phillips	Heritage Now	Email	28/04/2021	

Contact	Organisation	Contacted by	Organisation	Method	Date	Comment/response
Darren McKenny	Arwarbukarl Cultural Resource Association, Miromaa Aboriginal Language and Technology Centre	Crystal Phillips	Heritage Now	Email	28/04/2021	
Tracey Howie & Kerrie Brauer	Awabakal & Guringai Pty Ltd	Crystal Phillips	Heritage Now	Email	28/04/2021	
Peter Leven	Awabakal Descendants Traditional Owners	Crystal Phillips	Heritage Now	Email	28/04/2021	
CEO	Awabakal Local Aboriginal Land Council	Crystal Phillips	Heritage Now	Email	28/04/2021	
Kerrie Brauer	Awabakal Traditional Owners Aboriginal Corporation	Crystal Phillips	Heritage Now	Email	28/04/2021	
Nola Hampton	B-H Heritage Consultants	Crystal Phillips	Heritage Now	Email	28/04/2021	
Darren Hampton	B-H Heritage Consultants	Crystal Phillips	Heritage Now	Email	28/04/2021	
Ralph Hampton	B-H Heritage Consultants	Crystal Phillips	Heritage Now	Email	28/04/2021	
Donna & George Sampson	Cacatua Culture Consultants	Crystal Phillips	Heritage Now	Email	28/04/2021	
Marilyn Carroll-Johnson	Corroboree Aboriginal Corporation	Crystal Phillips	Heritage Now	Email	28/04/2021	
Jeffery Matthews	Crimson-Rosie	Crystal Phillips	Heritage Now	Mail	28/04/2021	

Contact	Organisation	Contacted by	Organisation	Method	Date	Comment/response
Deslee Matthews	Deslee Talbott Consultants	Crystal Phillips	Heritage Now	Email	28/04/2021	
Derrick Vale Snr	DFTV Enterprises	Crystal Phillips	Heritage Now	Email	28/04/2021	
Paul Boyd & Lilly Carroll	Didge Ngunawal Clan	Crystal Phillips	Heritage Now	Email	28/04/2021	
Deidre Perkins	Divine Diggers Aboriginal Cultural Consultants	Crystal Phillips	Heritage Now	Email	28/04/2021	
Craig Home and Debbie Dacey-Sullivan	Gidawaa Walang & Barkuma Neighbourhood Centre Inc.	Crystal Phillips	Heritage Now	Email	28/04/2021	
Luke Hickey	Hunter Valley Cultural Surveying	Crystal Phillips	Heritage Now	Email	28/04/2021	
Craig Archibald	Indigenous Learning	Crystal Phillips	Heritage Now	Mail	29/04/2021	
Les Atkinson	Jarban & Mugrebea	Crystal Phillips	Heritage Now	Email	28/04/2021	
Norm Archibald	Jumbunna Traffic Management Group Pty Ltd	Crystal Phillips	Heritage Now	Email	28/04/2021	
Jill Green	Kauma Pondee Inc.	Crystal Phillips	Heritage Now	Email	28/04/2021	
Arthur Fletcher	Kawul Pty Ltd trading as Wonn1 Sites	Crystal Phillips	Heritage Now	Email	28/04/2021	
David Ahoy	Lower Hunter Aboriginal Incorporated	Crystal Phillips	Heritage Now	Email	28/04/2021	
Lea-Anne Ball	Lower Hunter Wonnarua Cultural Services	Crystal Phillips	Heritage Now	Email	28/04/2021	

Contact	Organisation	Contacted by	Organisation	Method	Date	Comment/response
Michael Green	Michael Green Cultural Heritage Consultant	Crystal Phillips	Heritage Now	Mail	29/04/2021	
CEO	Mindaribba Local Aboriginal Land Council	Crystal Phillips	Heritage Now	Email	28/04/2021	
Ryan Johnson & Darleen Johnson- Carroll	Murra Bidgee Mullangari Aboriginal Corporation	Crystal Phillips	Heritage Now	Email	28/04/2021	
Anthony Anderson	Mur-Roo-Ma Inc.	Crystal Phillips	Heritage Now	Email	28/04/2021	
Warren Schillings	Myland Cultural & Heritage Group	Crystal Phillips	Heritage Now	Email	28/04/2021	
Leonard Anderson OAM	Nur-Run-Gee Pty Ltd	Crystal Phillips	Heritage Now	Email	28/04/2021	
Roger Matthews	Roger Matthews Consultancy	Crystal Phillips	Heritage Now	Email	28/04/2021	
Scott Franks	Tocomwall Pty Ltd	Crystal Phillips	Heritage Now	Email	28/04/2021	
Des Hickey	Wattaka Wonnarua CC Service	Crystal Phillips	Heritage Now	Email	28/04/2021	
Steven Hickey	Widescope Indigenous Group	Crystal Phillips	Heritage Now	Email	28/04/2021	
Gordon Griffiths	Wonnarua Culture Heritage	Crystal Phillips	Heritage Now	Mail	29/04/2021	
Richard Edwards	Wonnarua Elders Council	Crystal Phillips	Heritage Now	Mail	29/04/2021	
CEO	Worimi Local Aboriginal Land Council	Crystal Phillips	Heritage Now	Email	28/04/2021	

Contact	Organisation	Contacted by	Organisation	Method	Date	Comment/response
Candy Lee Towers	Worimi Traditional Owners Indigenous Corporation	Crystal Phillips	Heritage Now	Email	28/04/2021	
Kathleen Steward Kinchela	Yinarr Cultural Services	Crystal Phillips	Heritage Now	Email	28/04/2021	
Steve Talbott		Crystal Phillips	Heritage Now	Email	28/04/2021	
Kevin Duncan		Crystal Phillips	Heritage Now	Email	28/04/2021	
Kyle Howie		Crystal Phillips	Heritage Now	Email	28/04/2021	
Trudy Smith		Crystal Phillips	Heritage Now	Email	28/04/2021	
Yvette and Jackson Walker		Crystal Phillips	Heritage Now	Email	28/04/2021	
Tamara Towers		Crystal Phillips	Heritage Now	Email	28/04/2021	
Olivia Connors		Crystal Phillips	Heritage Now	Email	28/04/2021	
Ron Smith		Crystal Phillips	Heritage Now	Email	28/04/2021	
EOI Responses						
Crystal Phillips	Heritage Now	Paul Boyd and Lilly Carrol	Didge Ngunawal Clan	Email	28/04/2021	
Crystal Phillips	Heritage Now	Scott Franks	Tocomwall Pty Ltd	Email	28/04/2021	The Project is outside of his area, forwarded it on to other knowledge holders of the area
Crystal Phillips	Heritage Now	Robert Syron	Worimi Guringai Lands	Email	29/04/2021	
Tessa Boer-Mah	Heritage Now	Peter Townsend	Awabakal Local Aboriginal Land Council	Email	29/04/2021	
Trishia Palconit	Heritage Now	Olivia Connors		Email	5/05/2021	
Crystal Phillips	Heritage Now	David Ahoy	Lower Hunter Aboriginal Incorporated	Email	5/05/2021	

Contact	Organisation	Contacted by	Organisation	Method	Date	Comment/response
Tessa Boer-Mah	Heritage Now	Trudy Smith		Email	6/05/2021	
Crystal Phillips	Heritage Now	Les Atkinson	Jarban & Mugrebea	Email	6/05/2021	
Crystal Phillips	Heritage Now	Kathleen Steward Kinchela	Yinarr Cultural Services	Email	10/06/2021	Late registration
Methodology Letter Sent						
Carolyn Hickey	A1 Indigenous Services	Crystal Phillips	Heritage Now	Email	13/05/2021	
Trudy Smith		Crystal Phillips	Heritage Now	Email	13/05/2021	
Peter Townsend	Awabakal Local Aboriginal Land Council	Crystal Phillips	Heritage Now	Email	13/05/2021	
Kerrie Brauer	Awabakal Traditional Owners Aboriginal Corporation	Crystal Phillips	Heritage Now	Email	13/05/2021	
Paul Boyd & Lilly Carroll	Didge Ngunawal Clan	Crystal Phillips	Heritage Now	Email	13/05/2021	
Les Atkinson	Jarban & Mugrebea	Crystal Phillips	Heritage Now	Email	13/05/2021	
David Ahoy	Lower Hunter Aboriginal Incorporated	Crystal Phillips	Heritage Now	Email	13/05/2021	
Robert Syron	Worimi Guringai Lands	Crystal Phillips	Heritage Now	Email	13/05/2021	
Olivia Connors		Crystal Phillips	Heritage Now	Email	13/05/2021	
Confidential RAP 1	Confidential RAP 1	Crystal Phillips	Heritage Now	Email	13/05/2021	
Confidential RAP 2	Confidential RAP 2	Crystal Phillips	Heritage Now	Email	13/05/2021	

Contact	Organisation	Contacted by	Organisation	Method	Date	Comment/response
Kathleen Steward Kinchela	Yinarr Cultural Services	Crystal Phillips	Heritage Now	Email	10/06/2021	
Methodology Letter Responses						
Crystal Phillips	Heritage Now	Paul Boyd and Lilly Carrol	Didge Ngunawal Clan	Email	13/05/2021	Agrees with methodology
Crystal Phillips	Heritage Now	Confidential RAP 1	Confidential	Email	27/05/2021	Agrees with methodology
Trishia Palconit	Heritage Now	Peter Townsend	Awabakal Local Aboriginal Land Council	Email	13/05/2021	Queries about processes in recording, further analysis, and care and control of recovered objects/materials
Crystal Phillips	Heritage Now	Confidential RAP 2	Confidential	Email	27/05/2021	Agrees with methodology
Crystal Phillips	Heritage Now	Carolyn Hickey	A1 Indigenous Services	Email	6/06/2021	Agrees with methodology
Notification Letter						
	Heritage NSW	Crystal Phillips	Heritage Now	Email	19/05/2021	
Peter Townsend	Awabakal Local Aboriginal Land Council	Crystal Phillips	Heritage Now	Email	19/05/2021	
RAPs engaged for field work						
Peter Townsend	Awabakal Local Aboriginal Land Council					
Draft Report Sent for Review						
Carolyn Hickey	A1 Indigenous Services	Joven Sanchez	Heritage Now	Email	3/09/2021	
Trudy Smith		Joven Sanchez	Heritage Now	Email	3/09/2021	
Peter Townsend	Awabakal Local Aboriginal Land Council	Joven Sanchez	Heritage Now	Email	3/09/2021	

Contact	Organisation	Contacted by	Organisation	Method	Date	Comment/response
Kerrie Brauer	Awabakal Traditional Owners Aboriginal Corporation	Joven Sanchez	Heritage Now	Email	3/09/2021	
Paul Boyd & Lilly Carroll	Didge Ngunawal Clan	Joven Sanchez	Heritage Now	Email	3/09/2021	
Les Atkinson	Jarban & Mugrebea	Joven Sanchez	Heritage Now	Email	3/09/2021	
David Ahoy	Lower Hunter Aboriginal Incorporated	Joven Sanchez	Heritage Now	Email	3/09/2021	
Robert Syron	Worimi Guringai Lands	Joven Sanchez	Heritage Now	Email	3/09/2021	
Kathleen Steward Kinchela	Yinarr Cultural Services	Joven Sanchez	Heritage Now	Email	3/09/2021	
Olivia Connors	Individual	Joven Sanchez	Heritage Now	Email	3/09/2021	
Shane Frost & Peter Leven	Awabakal Descendants Traditional Owners Aboriginal Corporation	Joven Sanchez	Heritage Now	Email	3/09/2021	
Confidential RAP 1	Confidential RAP 1	Joven Sanchez	Heritage Now	Email	3/09/2021	
Confidential RAP 2	Confidential RAP 2	Joven Sanchez	Heritage Now	Email	3/09/2021	
Reminder to respond to draft report						
Carolyn Hickey	A1 Indigenous Services	Joven Sanchez	Heritage Now	Email	28/09/2021	
Trudy Smith		Joven Sanchez	Heritage Now	Email	28/09/2021	
Peter Townsend	Awabakal Local Aboriginal Land Council	Joven Sanchez	Heritage Now	Email	28/09/2021	

Contact	Organisation	Contacted by	Organisation	Method	Date	Comment/response
Kerrie Brauer	Awabakal Traditional Owners Aboriginal Corporation	Joven Sanchez	Heritage Now	Email	28/09/2021	
Paul Boyd & Lilly Carroll	Didge Ngunawal Clan	Joven Sanchez	Heritage Now	Email	28/09/2021	
Les Atkinson	Jarban & Mugrebea	Joven Sanchez	Heritage Now	Email	28/09/2021	
David Ahoy	Lower Hunter Aboriginal Incorporated	Joven Sanchez	Heritage Now	Email	28/09/2021	
Robert Syron	Worimi Guringai Lands	Joven Sanchez	Heritage Now	Email	28/09/2021	
Kathleen Steward Kinchela	Yinarr Cultural Services	Joven Sanchez	Heritage Now	Email	28/09/2021	
Olivia Connors	Individual	Joven Sanchez	Heritage Now	Email	28/09/2021	
Shane Frost & Peter Leven	Awabakal Descendants Traditional Owners Aboriginal Corporation	Joven Sanchez	Heritage Now	Email	28/09/2021	
Confidential RAP 1	Confidential RAP 1	Joven Sanchez	Heritage Now	Email	28/09/2021	
Confidential RAP 2	Confidential RAP 2	Joven Sanchez	Heritage Now	Email	28/09/2021	
Designing with Country Meetings						
Olivia Connors	Awabakal Descendent	Tessa Boer-Mah	Heritage Now	Online Meeting	3/09/2021	Minutes sent out 28/9/2021
Peter Townsend	Awabakal Local Aboriginal Land Council (LALC) – Cultural Heritage Officer	Tessa Boer-Mah	Heritage Now	Online Meeting	6/09/2021	Minutes sent out 28/9/2021

Contact	Organisation	Contacted by	Organisation	Method	Date	Comment/response
Shane Frost	Awabakal Descendants Traditional Owners Aboriginal Corporation	Tessa Boer-Mah	Heritage Now	Online Meeting	6/09/2021	Minutes sent out 28/9/2021
Jacqui Allen	Miromaa Aboriginal Language and Technology Centre – Language Coordinator	Tessa Boer-Mah	Heritage Now	Online Meeting	6/09/2021	Minutes sent out 28/9/2021
Responses to Draft Report						
Joven Sanchez	Heritage Now	Lilly Carroll	Didge Ngunawal Clan	Email	28/09/2021	Agrees with recommendations
Joven Sanchez	Heritage Now	Kerrie Brauer	Awabakal Traditional Owners Aboriginal Corporation	Email	28/09/2021	Agrees with the proposed recommendations Suggested that the recommendations include reference to Designing with Country to emphasise the importance of incorporating cultural design. Recommended that Cultural Heritage Induction be provided by Awabakal Traditional Owners. Does not support the removal of topsoil from the site

Contact	Organisation	Contacted by	Organisation	Method	Date	Comment/response
Joven Sanchez	Heritage Now	Shane Frost	Awabakal Descendants Traditional Owners Aboriginal Corporation	Email	28/09/2021	Attached response to the draft ACHAR. Agrees overall, wishes to add that induction be provided by Awabakal Descendants
Joven Sanchez	Heritage Now	Robert Syron	Worimi Guringai Lands	Email	1/10/2021	Sent references to add to report (refer to email)
Final Report Sent Out						
Carolyn Hickey	A1 Indigenous Services	Joven Sanchez	Heritage Now	Email	13/10/2021	
Trudy Smith		Joven Sanchez	Heritage Now	Email	13/10/2021	
Peter Townsend	Awabakal Local Aboriginal Land Council	Joven Sanchez	Heritage Now	Email	13/10/2021	
Kerrie Brauer	Awabakal Traditional Owners Aboriginal Corporation	Joven Sanchez	Heritage Now	Email	13/10/2021	
Paul Boyd & Lilly Carroll	Didge Ngunawal Clan	Joven Sanchez	Heritage Now	Email	13/10/2021	
Les Atkinson	Jarban & Mugrebea	Joven Sanchez	Heritage Now	Email	13/10/2021	
David Ahoy	Lower Hunter Aboriginal Incorporated	Joven Sanchez	Heritage Now	Email	13/10/2021	
Robert Syron	Worimi Guringai Lands	Joven Sanchez	Heritage Now	Email	13/10/2021	
Kathleen Steward Kinchela	Yinarr Cultural Services	Joven Sanchez	Heritage Now	Email	13/10/2021	
Olivia Connors	Individual	Joven Sanchez	Heritage Now	Email	13/10/2021	

Contact	Organisation	Contacted by	Organisation	Method	Date	Comment/response
Shane Frost & Peter Leven	Awabakal Descendants Traditional Owners Aboriginal Corporation	Joven Sanchez	Heritage Now	Email	13/10/2021	
Confidential RAP 1	Confidential RAP 1	Joven Sanchez	Heritage Now	Email	13/10/2021	
Confidential RAP 2	Confidential RAP 2	Joven Sanchez	Heritage Now	Email	13/10/2021	
Draft ACHMSP Sent Out						
Carolyn Hickey	A1 Indigenous Services	Joven Sanchez	Heritage Now	Email	5/07/2023	
Trudy Smith		Joven Sanchez	Heritage Now	Email	5/07/2023	
Peter Townsend	Awabakal Local Aboriginal Land Council	Joven Sanchez	Heritage Now	Email	5/07/2023	
Kerrie Brauer	Awabakal Traditional Owners Aboriginal Corporation	Joven Sanchez	Heritage Now	Email	5/07/2023	
Paul Boyd & Lilly Carroll	Didge Ngunawal Clan	Joven Sanchez	Heritage Now	Email	5/07/2023	
Les Atkinson	Jarban & Mugrebea	Joven Sanchez	Heritage Now	Email	5/07/2023	
David Ahoy	Lower Hunter Aboriginal Incorporated	Joven Sanchez	Heritage Now	Email	5/07/2023	
Robert Syron	Worimi Guringai Lands	Joven Sanchez	Heritage Now	Email	5/07/2023	
Kathleen Steward Kinchela	Yinarr Cultural Services	Joven Sanchez	Heritage Now	Email	5/07/2023	
Olivia Connors	Individual	Joven Sanchez	Heritage Now	Email	5/07/2023	

Contact	Organisation	Contacted by	Organisation	Method	Date	Comment/response
Shane Frost & Peter Leven	Awabakal Descendants Traditional Owners Aboriginal Corporation	Joven Sanchez	Heritage Now	Email	5/07/2023	
Confidential RAP 1	Confidential RAP 1	Joven Sanchez	Heritage Now	Email	5/07/2023	
Confidential RAP 2	Confidential RAP 2	Joven Sanchez	Heritage Now	Email	5/07/2023	
Responses to Draft ACHMSP						
No responses were received on the Draft ACHMSP						
Final ACHMSP Sent Out						
Carolyn Hickey	A1 Indigenous Services	Joven Sanchez	Heritage Now	Email	11/08/2023	
Trudy Smith		Joven Sanchez	Heritage Now	Email	11/08/2023	
Peter Townsend	Awabakal Local Aboriginal Land Council	Joven Sanchez	Heritage Now	Email	11/08/2023	
Kerrie Brauer	Awabakal Traditional Owners Aboriginal Corporation	Joven Sanchez	Heritage Now	Email	11/08/2023	
Paul Boyd & Lilly Carroll	Didge Ngunawal Clan	Joven Sanchez	Heritage Now	Email	11/08/2023	
Les Atkinson	Jarban & Mugrebea	Joven Sanchez	Heritage Now	Email	11/08/2023	
David Ahoy	Lower Hunter Aboriginal Incorporated	Joven Sanchez	Heritage Now	Email	11/08/2023	
Robert Syron	Worimi Guringai Lands	Joven Sanchez	Heritage Now	Email	11/08/2023	
Kathleen Steward Kinchela	Yinarr Cultural Services	Joven Sanchez	Heritage Now	Email	11/08/2023	

Contact	Organisation	Contacted by	Organisation	Method	Date	Comment/response
Olivia Connors	Individual	Joven Sanchez	Heritage Now	Email	11/08/2023	
Shane Frost & Peter Leven	Awabakal Descendants Traditional Owners Aboriginal Corporation	Joven Sanchez	Heritage Now	Email	11/08/2023	
Confidential RAP 1	Confidential RAP 1	Joven Sanchez	Heritage Now	Email	11/08/2023	
Confidential RAP 2	Confidential RAP 2	Joven Sanchez	Heritage Now	Email	11/08/2023	
Invitation to provide verbal feedback on ACHMSP						
Carolyn Hickey	A1 Indigenous Services	Kira Paznikov	Heritage Now	Phone	9/11/2023	Carolyn noted that she would respond via email.
Trudy Smith		Kira Paznikov	Heritage Now	Phone	9/11/2023	No answer.Voicemail message with invitation left.
Matt Syron	Awabakal Local Aboriginal Land Council	Kira Paznikov	Heritage Now	Phone	9/11/2023	Will take a look at email and respond.
Kerrie Brauer	Awabakal Traditional Owners Aboriginal Corporation	Kira Paznikov	Heritage Now	Phone	9/11/2023	Agrees with sub-plan of management. Confirmation email sent.
Paul Boyd & Lilly Carroll	Didge Ngunawal Clan	Kira Paznikov	Heritage Now	Phone	9/11/2023	Agrees with sub-plan of management. Confirmation email sent.
David Ahoy	Lower Hunter Aboriginal Incorporated	Kira Paznikov	Heritage Now	Phone	9/11/2023	No answer and no voicemail service
Robert Syron	Worimi Guringai Lands	Kira Paznikov	Heritage Now	Phone	9/11/2023	No answer and no voicemail service

Contact	Organisation	Contacted by	Organisation	Method	Date	Comment/response
Kathleen Steward Kinchela	Yinarr Cultural Services	Kira Paznikov	Heritage Now	Phone	9/11/2023	No answer and no voicemail service
Olivia Connors	Individual	Kira Paznikov	Heritage Now	Phone	9/11/2023	No answer.Voicemail message with invitation left.
Peter Leven	Awabakal Descendants Traditional Owners Aboriginal Corporation	Kira Paznikov	Heritage Now	Phone	9/11/2023	No answer.Voicemail message with invitation left.
Confidential RAP 1	Confidential RAP 1	Kira Paznikov	Heritage Now	Phone	9/11/2023	Will take a look at email and respond.
Confidential RAP 2	Confidential RAP 2	Kira Paznikov	Heritage Now	Phone	9/11/2023	Has passed away. Has been removed from RAP list.
Invitation to Tender for Fieldwork						
All RAPs		Ngaire Richards	Heritage Now	Email	4/09/2023	Request for tender for participation in excavation by 8/9/2023
Ngaire Richards	Heritage Now	Olivia Connors	Individual	Email	4/09/2023	Delivery Status Notification (Failure)
Olivia Connors	Individual	Ngaire Richards	Heritage Now	Email	4/09/2023	Resent request for tender for participation in excavation by 8/9/2023 to alternative email address
Responses to Invitation to Tender for Fieldwork						
Ngaire Richards	Heritage Now	Peter Leven	Awabakal Descendants Traditional Owners Aboriginal Corporation	Email	5/09/2023	Sent filled out invitation, schedule of fees, and CoCs

Contact	Organisation	Contacted by	Organisation	Method	Date	Comment/response
	Heritage Now	Olivia Connors	Nukara Cultural Services	Email	5/09/2023	Expressed interest and sent filled out invitation
Ngairé Richards	Heritage Now	Paul Boyd & Lilly Carroll	Didge Ngunawal Clan	Email	5/09/2023	Sent filled out invitation and CoCs
	Heritage Now	Matthew Syron	Awabakal Local Aboriginal Land Council	Email	6/09/2023	Expressed interest and indicated rate
	Heritage Now	Kathleen Steward Kinchela	Yinarr Cultural Services	Email	8/09/2023	Sent filled out invitation and CoCs
	Heritage Now	Carolyn Hickey	A1 Indigenous Services	Email	12/09/2023	Sent filled out invitation and CoCs
Ngairé Richards	Heritage Now	Kerrie Brauer	Awabakal Traditional Owners Aboriginal Corporation	Email	12/09/2023	Sent filled out invitation and CoCs
Ngairé Richards	Heritage Now	Amanda Hickey	Amanda Hickey Cultural Services	Email	20/09/2023	Sent tender to participate and insurance
Revised ACHMSP Methodology Sent Out						
Carolyn Hickey	A1 Indigenous Services	Tiffany Jones	Heritage Now	Email	5/10/2023	
Trudy Smith		Tiffany Jones	Heritage Now	Email	5/10/2023	
Matt Syron	Awabakal Local Aboriginal Land Council	Tiffany Jones	Heritage Now	Email	5/10/2023	
Kerrie Brauer	Awabakal Traditional Owners Aboriginal Corporation	Tiffany Jones	Heritage Now	Email	5/10/2023	
Paul Boyd & Lilly Carroll	Didge Ngunawal Clan	Tiffany Jones	Heritage Now	Email	5/10/2023	
Les Atkinson	Jarban & Mugrebea	Tiffany Jones	Heritage Now	Email	5/10/2023	

Contact	Organisation	Contacted by	Organisation	Method	Date	Comment/response
David Ahoy	Lower Hunter Aboriginal Incorporated	Tiffany Jones	Heritage Now	Email	5/10/2023	
Robert Syron	Worimi Guringai Lands	Tiffany Jones	Heritage Now	Email	5/10/2023	
Kathleen Steward Kinchela	Yinarr Cultural Services	Tiffany Jones	Heritage Now	Email	5/10/2023	
Olivia Connors		Tiffany Jones	Heritage Now	Email	5/10/2023	
Peter Leven	Awabakal Descendants Traditional Owners Aboriginal Corporation	Tiffany Jones	Heritage Now	Email	5/10/2023	
Confidential RAP 1	Confidential RAP 1	Tiffany Jones	Heritage Now	Email	5/10/2023	
Confidential RAP 2	Confidential RAP 2	Tiffany Jones	Heritage Now	Email	5/10/2023	
Amanda Hickey	Amanda Hickey Cultural Services	Tiffany Jones	Heritage Now	Email	5/10/2023	
Tracey Howie	Awabakal and Guringai Pty Ltd	Tiffany Jones	Heritage Now	Email	6/10/2023	Forwarded revised ACHMSP methodology as she is now an additional contact for Awabakal and Guringai Pty Ltd
Invitation to Provide Verbal Feedback on Revised ACHMSP Methodology						
Tiffany Jones	Heritage Now	Peter Leven	Awabakal Descendants Traditional Owners Aboriginal Corporation	Phone	5/10/2023	Would look at the revision today and call/email with feedback.

Contact	Organisation	Contacted by	Organisation	Method	Date	Comment/response
Carolyn Hickey	A1 Indigenous Services	Tiffany Jones	Heritage Now	Phone	5/10/2023	Support revised methodology. Is interested in taking part in the excavations
Trudy Smith		Tiffany Jones	Heritage Now	Phone	5/10/2023	Supports any recommendations made by Kerrie Brauer
Matt Syron	Awabakal Local Aboriginal Land Council	Tiffany Jones	Heritage Now	Phone	5/10/2023	No answer. Voicemail left
Paul Boyd	Didge Ngunawal Clan	Tiffany Jones	Heritage Now	Phone	5/10/2023	Supports revised methodology
Confidential RAP 2	Confidential RAP 2	Tiffany Jones	Heritage Now	Phone	5/10/2023	Support revised methodology.
Amanda Hickey	Amanda Hickey Cultural Services	Tiffany Jones	Heritage Now	Phone	5/10/2023	Would like to register as a RAP and will provide feedback on the revised methodology later today. Late registration. Has forward through her insurance for fieldwork.
Les Atkinson	Jarban & Mugrebea	Tiffany Jones	Heritage Now	Phone	5/10/2023	Phone did not ring, could not leave voicemail
David Ahoy	Lower Hunter Aboriginal Incorporated	Tiffany Jones	Heritage Now	Phone	5/10/2023	Phone did not ring, could not leave voicemail
Robert Syron	Worimi Guringai Lands	Tiffany Jones	Heritage Now	Phone	5/10/2023	No answer. Voicemail left
Kathleen Steward Kinchela	Yinarr Cultural Services	Tiffany Jones	Heritage Now	Phone	5/10/2023	Phone did not ring, could not leave voicemail

Contact	Organisation	Contacted by	Organisation	Method	Date	Comment/response
Olivia Connors		Tiffany Jones	Heritage Now	Phone	5/10/2023	Supports revised methodology. Is interested in taking part in excavations.
Tiffany Jones	Heritage Now	Amanda Hickey	Amanda Hickey Cultural Services	Email	5/10/2023	Supports the amended methodology
Tiffany Jones	Heritage Now	Kerrie Brauer	Awabakal Traditional Owners Aboriginal Corporation	Phone	5/10/2023	Support the amended methodology. Wants it to be noted that considering how artefacts move through sand, be mindful of the pylon placement. Additional comments regarding the report: pg1 - the traditional custodians should be acknowledged before the LALC boundary (the ACHMSP was amended accordingly); pg 6 list of stakeholders should be updated to include Peter Leven (Awabakal descendants) and Tracey Howie (Awabakal and Guringai) (added to stakeholder list and copy of ACHMSP provided); would also like to see the artefacts reburied on school grounds with a garden or seat over the top to protect them

Contact	Organisation	Contacted by	Organisation	Method	Date	Comment/response
Tiffany Jones	Heritage Now	Robert Syron	Worimi Guringai Lands	Phone	5/10/2023	Supports the amended methodology. Also notes that only people with cultural associations to the area should provide input.
Carolyn Hickey	A1 Indigenous Services	Tiffany Jones	Heritage Now	Email	5/10/2023	Thanks for feedback and summary of conversation
Trudy Smith		Tiffany Jones	Heritage Now	Email	5/10/2023	Thanks for feedback and summary of conversation
Paul Boyd	Didge Ngunawal Clan	Tiffany Jones	Heritage Now	Email	5/10/2023	Thanks for feedback and summary of conversation
Confidential RAP 2	Confidential RAP 2	Tiffany Jones	Heritage Now	Email	5/10/2023	Thanks for feedback and summary of conversation
Amanda Hickey	Amanda Hickey Cultural Services	Tiffany Jones	Heritage Now	Email	5/10/2023	Thanks for feedback and summary of conversation
Olivia Connors		Tiffany Jones	Heritage Now	Email	5/10/2023	Thanks for feedback and summary of conversation
Kerrie Brauer	Awabakal Traditional Owners Aboriginal Corporation	Tiffany Jones	Heritage Now	Email	5/10/2023	Thanks for feedback and summary of conversation
Robert Syron	Worimi Guringai Lands	Tiffany Jones	Heritage Now	Email	5/10/2023	Thanks for feedback and summary of conversation

Contact	Organisation	Contacted by	Organisation	Method	Date	Comment/response
Tiffany Jones	Heritage Now	Peter Leven	Awabakal Descendants Traditional Owners Aboriginal Corporation	Phone	6/10/2023	Agrees with the revised methodology. Has raised concerns about the amount of pylons going in and would prefer full depth text excavations in these areas. Would also like a test pit within the the lift pit. TJ confirmed excavations would be undertaken to water table where required.
Peter Leven	Awabakal Descendants Traditional Owners Aboriginal Corporation	Tiffany Jones	Heritage Now	Email	6/10/2023	Thanks for feedback and summary of conversation
Responses to Revised ACHMSP Methodology						
Tiffany Jones	Heritage Now	Trudy Smith		Email	9/10/2023	Registered as individual only; asked to update info in records
Tiffany Jones	Heritage Now	Olivia Connors	Nukara Cultural Services	Email	16/10/2023	Agrees and supports revised methology and is available for excavations

Contact	Organisation	Contacted by	Organisation	Method	Date	Comment/response
Ngaire Richards	Heritage Now	Kerrie Brauer	Awabakal Traditional Owners Aboriginal Corporation	Email	1/11/2023	Response to feedback provided by email summarising updates to report including: clarification of piling placement and proposed mitigation (Section 5); disposition of Aboriginal objects to include option of re-burial on school grounds following consultation with RAPs (Section 6.3), acknowledgement of traditional custodians (Section 1.1), update names in Aboriginal consultation table (Section 3.1)



Hello At Heritage Now <hello@heritagenow.com.au>

Re: Urgent feedback request for Newcastle Grammar School ACHMSP HN2236

1 message

Amanda De Zwart <amandahickey@live.com.au>
To: Hello At Heritage Now <hello@heritagenow.com.au>

5 October 2023 at 12:53

Hi Tiffany

Thank you for the Updated methodology.
AHCS has read over the Amended methodology AHCS supports and it's happy with the Amended methodology.

If you have any questions or need anything else, please feel free to contact me..

Thanks Tiffany
Have a great day
Amanda Hickey AHCS

Get [Outlook for Android](#)

From: Hello At Heritage Now <hello@heritagenow.com.au>
Sent: Thursday, October 5, 2023 12:34:07 PM
To: Amanda DeZwart <amandahickey@live.com.au>
Subject: Urgent feedback request for Newcastle Grammar School ACHMSP HN2236

Good Afternoon,

The Newcastle Grammar School Aboriginal Cultural Heritage Management Sub-Plan was sent out for consultation some months ago. Due to additional geotechnical information being made available, we have changed the excavation methodology to suit. Can you please have a look at sections 5 and 6 of the attached report and provide feedback? We have also included them as a separate attachment as well.

Kind Regards,
Tiffany



*Heritage Now acknowledges the Traditional Custodians of the Aboriginal Lands on which we live, learn and work.
We pay our respects to Elders past, present and emerging.*



Hello At Heritage Now <hello@heritagenow.com.au>

Re: Urgent feedback request for Newcastle Grammar School ACHMSP HN2236

1 message

Hello At Heritage Now <hello@heritagenow.com.au>

5 October 2023 at 15:13

To: Cazadirect <Cazadirect@live.com>

Hi Carolyn,

Thanks for your time on the phone today.

As per our earlier conversation, I have made note that you support the revised methodology and are interested in taking part in the excavations.

Kind Regards,
Tiffany



Heritage Now acknowledges the Traditional Custodians of the Aboriginal Lands on which we live, learn and work. We pay our respects to Elders past, present and emerging.

On Thu, 5 Oct 2023 at 09:07, Hello At Heritage Now <hello@heritagenow.com.au> wrote:

Good Morning,

The Newcastle Grammar School Aboriginal Cultural Heritage Management Sub-Plan was sent out for consultation some months ago. Due to additional geotechnical information being made available, we have changed the excavation methodology to suit. Can you please have a look at sections 5 and 6 of the attached report and provide feedback? We have also included them as a separate attachment as well. Kind

Regards, Tiffany



Heritage Now acknowledges the Traditional Custodians of the Aboriginal Lands on which we live, learn and work. We pay our respects to Elders past, present and emerging.



Hello At Heritage Now <hello@heritagenow.com.au>

Re: Urgent feedback request for Newcastle Grammar School ACHMSP HN2236

1 message

Hello At Heritage Now <hello@heritagenow.com.au>

5 October 2023 at 15:16

To: Trudy Smith <hunters_1@bigpond.com>

Hi Trudy,

Thanks for your time on the phone today.

As per our earlier conversation, I have made note that you support any recommendations made by Kerrie Brauer.

Kind Regards,
Tiffany



Heritage Now
Consultation Team



Heritage Now acknowledges the Traditional Custodians of the Aboriginal Lands on which we live, learn and work. We pay our respects to Elders past, present and emerging.

On Thu, 5 Oct 2023 at 09:08, Hello At Heritage Now <hello@heritagenow.com.au> wrote:

Good Morning,

The Newcastle Grammar School Aboriginal Cultural Heritage Management Sub-Plan was sent out for consultation some months ago. Due to additional geotechnical information being made available, we have changed the excavation methodology to suit. Can you please have a look at sections 5 and 6 of the attached report and provide feedback? We have also included them as a separate attachment as well. Kind

Regards, Tiffany



Heritage Now
Consultation Team



Heritage Now acknowledges the Traditional Custodians of the Aboriginal Lands on which we live, learn and work. We pay our respects to Elders past, present and emerging.



Hello At Heritage Now <hello@heritagenow.com.au>

Re: Urgent feedback request for Newcastle Grammar School ACHMSP HN2236

1 message

Hello At Heritage Now <hello@heritagenow.com.au>
To: Didgengunawalclan <didgengunawalclan@yahoo.com.au>

5 October 2023 at 15:21

Hi Paul,

Thanks for your time on the phone today.

As per our earlier conversation, I have made note that you support the revised methodology.

Kind Regards,
Tiffany



Heritage Now
Consultation Team



Heritage Now acknowledges the Traditional Custodians of the Aboriginal Lands on which we live, learn and work. We pay our respects to Elders past, present and emerging.

On Thu, 5 Oct 2023 at 09:13, Hello At Heritage Now <hello@heritagenow.com.au> wrote:

Good Morning,

The Newcastle Grammar School Aboriginal Cultural Heritage Management Sub-Plan was sent out for consultation some months ago. Due to additional geotechnical information being made available, we have changed the excavation methodology to suit. Can you please have a look at sections 5 and 6 of the attached report and provide feedback? We have also included them as a separate attachment as well. Kind

Regards, Tiffany



Heritage Now
Consultation Team



Heritage Now acknowledges the Traditional Custodians of the Aboriginal Lands on which we live, learn and work. We pay our respects to Elders past, present and emerging.



Hello At Heritage Now <hello@heritagenow.com.au>

Re: Urgent feedback request for Newcastle Grammar School ACHMSP HN2236

1 message

Hello At Heritage Now <hello@heritagenow.com.au>
To: Amanda DeZwart <amandahickey@live.com.au>

5 October 2023 at 15:26

Hi Amanda,

Thanks for your time on the phone today.

As per our conversation, I have added you to the RAP list for this project. I have also received your feedback for the project's revised methodology and saved a copy of your insurance to our files. Thanks for resending it through.

Kind Regards,
Tiffany



Heritage Now
Consultation Team



Heritage Now acknowledges the Traditional Custodians of the Aboriginal Lands on which we live, learn and work. We pay our respects to Elders past, present and emerging.

On Thu, 5 Oct 2023 at 12:34, Hello At Heritage Now <hello@heritagenow.com.au> wrote:

Good Afternoon,

The Newcastle Grammar School Aboriginal Cultural Heritage Management Sub-Plan was sent out for consultation some months ago. Due to additional geotechnical information being made available, we have changed the excavation methodology to suit. Can you please have a look at sections 5 and 6 of the attached report and provide feedback? We have also included them as a separate attachment as well.

Kind Regards,
Tiffany



Heritage Now
Consultation Team



Heritage Now acknowledges the Traditional Custodians of the Aboriginal Lands on which we live, learn and work. We pay our respects to Elders past, present and emerging.



Hello At Heritage Now <hello@heritagenow.com.au>

Re: Urgent feedback request for Newcastle Grammar School ACHMSP HN2236

1 message

Hello At Heritage Now <hello@heritagenow.com.au>
To: Nukara Culture <nukarakara@outlook.com>

5 October 2023 at 15:29

Hi Olivia,

Thanks for your time on the phone today.

As per our conversation, I have noted you support the revised methodology and that you are interested in taking part in the excavations.

Kind Regards,
Tiffany



Heritage Now acknowledges the Traditional Custodians of the Aboriginal Lands on which we live, learn and work. We pay our respects to Elders past, present and emerging.

On Thu, 5 Oct 2023 at 09:16, Hello At Heritage Now <hello@heritagenow.com.au> wrote:

Good Morning,

The Newcastle Grammar School Aboriginal Cultural Heritage Management Sub-Plan was sent out for consultation some months ago. Due to additional geotechnical information being made available, we have changed the excavation methodology to suit. Can you please have a look at sections 5 and 6 of the attached report and provide feedback? We have also included them as a separate attachment as well. Kind

Regards, Tiffany



Heritage Now acknowledges the Traditional Custodians of the Aboriginal Lands on which we live, learn and work. We pay our respects to Elders past, present and emerging.



Hello At Heritage Now <hello@heritagenow.com.au>

Re: Urgent feedback request for Newcastle Grammar School ACHMSP HN2236

1 message

Hello At Heritage Now <hello@heritagenow.com.au>
To: Kerrie Brauer <Kerrie@awabakal.com.au>

5 October 2023 at 15:36

Hi Kerrie,

Thanks for your time on the phone today.

As per our conversation, I have noted you support the revised methodology and to be mindful of the pylon placement by considering how artefacts move through sand. I have also recorded your additional feedback about the report in regard to the acknowledgement of the traditional custodians of the land, the updating of names in the Aboriginal Consultation table, and the suggestion of reburring any recovered artefacts on the school ground underneath a garden or a seat.

Kind Regards,
Tiffany



On Thu, 5 Oct 2023 at 09:11, Hello At Heritage Now <hello@heritagenow.com.au> wrote:

Good Morning,

The Newcastle Grammar School Aboriginal Cultural Heritage Management Sub-Plan was sent out for consultation some months ago. Due to additional geotechnical information being made available, we have changed the excavation methodology to suit. Can you please have a look at sections 5 and 6 of the attached report and provide feedback? We have also included them as a separate attachment as well. Kind Regards, Tiffany





Hello At Heritage Now <hello@heritagenow.com.au>

Re: Urgent feedback request for Newcastle Grammar School ACHMSP HN2236

1 message

Hello At Heritage Now <hello@heritagenow.com.au>
To: Bob & Sam <bobsam1@bigpond.net.au>

5 October 2023 at 15:42

Hi Robert,

Thanks for your time on the phone today.

As per our conversation, I have noted that you support the amended methodology as well as your feedback that only individuals with a cultural association to the area should provide input about the project.

Kind Regards,
Tiffany



 Joven	 Jacqui	 Tiffany	 Crystal	 Kira
 Jenna	 Ngairé	 Kylie	 Trish	 Tessa

Heritage Now acknowledges the Traditional Custodians of the Aboriginal Lands on which we live, learn and work. We pay our respects to Elders past, present and emerging.

On Thu, 5 Oct 2023 at 09:15, Hello At Heritage Now <hello@heritagenow.com.au> wrote:

Good Morning,

The Newcastle Grammar School Aboriginal Cultural Heritage Management Sub-Plan was sent out for consultation some months ago. Due to additional geotechnical information being made available, we have changed the excavation methodology to suit. Can you please have a look at sections 5 and 6 of the attached report and provide feedback? We have also included them as a separate attachment as well. Kind

Regards, Tiffany



 Joven	 Jacqui	 Tiffany	 Crystal	 Kira
 Jenna	 Ngairé	 Kylie	 Trish	 Tessa

Heritage Now acknowledges the Traditional Custodians of the Aboriginal Lands on which we live, learn and work. We pay our respects to Elders past, present and emerging.



Hello At Heritage Now <hello@heritagenow.com.au>

Re: Urgent feedback request for Newcastle Grammar School ACHMSP HN2236

1 message

Hello At Heritage Now <hello@heritagenow.com.au>
To: Peter Leven <peterleven@y7mail.com>

6 October 2023 at 09:18

Hi Peter,

Thanks for your time on the phone this morning.

As per our conversation, I have noted you support the revised methodology as well as your concerns about the amount of pylons going in and wanting full depth test excavations in these areas. Your additional feedback regarding the placement of a test pit within the lift pit has also been noted.

Kind Regards,
Tiffany



Heritage Now acknowledges the Traditional Custodians of the Aboriginal Lands on which we live, learn and work. We pay our respects to Elders past, present and emerging.

On Thu, 5 Oct 2023 at 09:09, Hello At Heritage Now <hello@heritagenow.com.au> wrote:

Good Morning,

The Newcastle Grammar School Aboriginal Cultural Heritage Management Sub-Plan was sent out for consultation some months ago. Due to additional geotechnical information being made available, we have changed the excavation methodology to suit. Can you please have a look at sections 5 and 6 of the attached report and provide feedback? We have also included them as a separate attachment as well. Kind

Regards, Tiffany



Heritage Now acknowledges the Traditional Custodians of the Aboriginal Lands on which we live, learn and work. We pay our respects to Elders past, present and emerging.



Hello At Heritage Now <hello@heritagenow.com.au>

Fwd: Urgent feedback request for Newcastle Grammar School ACHMSP HN2236

1 message

Hello At Heritage Now <hello@heritagenow.com.au>
To: Tracey <tracey@guringai.com.au>

6 October 2023 at 09:47

Hi Tracey,

The following information is in regard to a project at the Newcastle Grammar School - Park Campus that has been running for over 2.5 years, for which Trudy is listed as the contact for Awabakal and Guringai Pty Ltd. This was brought to my attention after speaking to both Kerrie and Trudy, who have recommended that correspondence regarding the project is also forwarded to you. Please find attached the Newcastle Grammar School Aboriginal Cultural Heritage Management Sub-Plan, which contains the proposed methodology for investigations at the school, for your information.

Please feel free to contact me if you have any questions.

Kind Regards,
Tiffany



----- Forwarded message -----

From: Hello At Heritage Now <hello@heritagenow.com.au>
Date: Thu, 5 Oct 2023 at 09:08
Subject: Urgent feedback request for Newcastle Grammar School ACHMSP HN2236
To: Trudy Smith <hunters_1@bigpond.com>

Good Morning,

The Newcastle Grammar School Aboriginal Cultural Heritage Management Sub-Plan was sent out for consultation some months ago. Due to additional geotechnical information being made available, we have changed the excavation methodology to suit. Can you please have a look at sections 5 and 6 of the attached report and provide feedback? We have also included them as a separate attachment as well. Kind Regards,
Tiffany



2 attachments

Sections 5 and 6.pdf
627K



Heritage Now Report HN236-C ACHMSP Newcastle FINAL 4 Oct.pdf
1759K



Hello At Heritage Now <hello@heritagenow.com.au>

RE: Urgent feedback request for Newcastle Grammar School ACHMSP HN2236

1 message

hunters_1@bigpond.com <hunters_1@bigpond.com>
To: Hello At Heritage Now <hello@heritagenow.com.au>

9 October 2023 at 16:51

Thanks for your call last week, Tiffany.

Just to clarify, I only registered on behalf of my own individual name as an Registered Aboriginal Proponent....can you please update this on all of your records.

Regards

Trudy Smith

0409 449609

From: Hello At Heritage Now <hello@heritagenow.com.au>
Sent: 5 October, 2023 9:09 AM
To: Trudy Smith <hunters_1@bigpond.com>
Subject: Urgent feedback request for Newcastle Grammar School ACHMSP HN2236

Good Morning,

The Newcastle Grammar School Aboriginal Cultural Heritage Management Sub-Plan was sent out for consultation some months ago. Due to additional geotechnical information being made available, we have changed the excavation methodology to suit. Can you please have a look at sections 5 and 6 of the attached report and provide feedback? We have also included them as a separate attachment as well. Kind Regards, Tiffany



*Heritage Now acknowledges the Traditional Custodians of the Aboriginal Lands on which we live, learn and work.
We pay our respects to Elders past, present and emerging.*

HN236-C Newcastle Grammar School ACHMSP feedback

1 message

Hello At Heritage Now <hello@heritagenow.com.au>
 To: Kerrie Brauer <Kerrie@awabakal.com.au>
 Cc: Hello At Heritage Now <hello@heritagenow.com.au>

1 November 2023 at 10:42

Dear Kerrie,

Thank you for your recent comments regarding the Newcastle Grammar School Aboriginal Cultural Heritage Management Sub-Plan (ACHMSP). This email is being provided in response to a Request for Additional Information from Heritage NSW regarding the ACHMSP, which identified that the plan should be revised to indicate which section of the plan addresses the feedback received from the Awabakal Descendants Traditional Owners Aboriginal Corporation. The changes we have made and the sections updated are summarised below:

- Be mindful of piling placement

We have updated the impact assessment (Section 5) to clarify that the piling placement has been determined to support the structure, and there is little scope to change the building design. The mitigation of this impact will be offset by the archaeological work carried out on site, including targeting piling locations for test excavation, followed by salvage excavation (if required).

- Re-burial of artefacts on school grounds

We have updated the section regarding the disposition of Aboriginal objects recovered during the excavation (Section 6.3), to include the option of reburial on site following the completion of the project works, to be determined in consultation with Registered Aboriginal Parties.

- Acknowledgement of the traditional custodians of the land

We have updated the report introduction to reflect this (Section 1.1).

- Update names in the Aboriginal Consultation table

We have updated the stakeholder names to reflect this (Section 3.1).

Regards,
 Ngaire Richards

--



Heritage Now acknowledges the Traditional Custodians of the Aboriginal Lands on which we live, learn and work.
 We pay our respects to Elders past, present and emerging.



On Thu, 5 Oct 2023 at 15:36, Hello At Heritage Now <hello@heritagenow.com.au> wrote:
 Hi Kerrie,

Thanks for your time on the phone today.

As per our conversation, I have noted you support the revised methodology and to be mindful of the pylon placement by considering how artefacts move through sand. I have also recorded your additional feedback about the report in regard to the acknowledgement of the traditional custodians of the land, the updating of names in the Aboriginal Consultation table, and the suggestion of reburring any recovered artefacts on the school ground underneath a garden or a seat.

Kind Regards,
Tiffany



Heritage Now acknowledges the Traditional Custodians of the Aboriginal Lands on which we live, learn and work. We pay our respects to Elders past, present and emerging.

On Thu, 5 Oct 2023 at 09:11, Hello At Heritage Now <hello@heritagenow.com.au> wrote:

Good Morning,

The Newcastle Grammar School Aboriginal Cultural Heritage Management Sub-Plan was sent out for consultation some months ago. Due to additional geotechnical information being made available, we have changed the excavation methodology to suit. Can you please have a look at sections 5 and 6 of the attached report and provide feedback? We have also included them as a separate attachment as well.

Kind Regards, Tiffany



Heritage Now acknowledges the Traditional Custodians of the Aboriginal Lands on which we live, learn and work. We pay our respects to Elders past, present and emerging.

Appendix 2 Summary of Aboriginal site features from excavations in Newcastle.

Table 6. Summary of Aboriginal site features from excavations in Newcastle.

Location	Distance from Project Area	Total area excavated (m ²)	Artefact count	Average artefact density (per m ²)	Artefact material (count)	Artefact type (count)	Presence of midden (Yes/No) - most abundant shellfish species	Site Interpretation	Estimated Age
Palais Royale site, 684 Hunter St (AHMS 2011)	c0.9km north	48	5,534	115.3	Chert (189), Silcrete (85), FGS (17), Chalcedony (1), Quartz crystalline (3), Quartz milky (3), Quartzite (2), Sandstone (4), Volcanic (8), Glass (1)	Broken Flake (2,133), Flake (1,702), Other including Manuports / Cobbles / Split Cobbles / Indeterminate (1,095), Angular Fragment (400), Complete/ Broken Tool (152), Core/ Core Fragment (52)	Yes - <i>Anadara</i> sp., <i>Saccostrea</i> sp.	Short- or longer-term camp site	Three occupation periods in Early to Late Holocene (6,716 – 6,502 BP, c. 3,500 BP, and 2,480 – 1,933 BP). Evidence of continued occupation after 1,933 BP truncated by historical activities.
Boardwalk site, Honeysuckle Drive (Mary Dallas Consulting Archaeologists 2004)	c1.3km north-east	10	113	11.3	Tuff (99), Quartz (1), Rhyolite (1), Flint (11), Glass (1)	Flake (78), Flaked Piece (17), Broken Flake (14), Pot Lid (1)	Yes - <i>Pyrazus ebeninus</i> , <i>Anadara trapezia</i> , <i>Saccostrea commercialis</i>	Short term camp site	Unspecified – Late Holocene (?)
Newcastle Light Rail Project (Umwelt 2020)	c0.95km north	18	3,189	152.5 (ranging from 1-796 by excavation unit)	Tuff (3,148), Ignimbrite (12), Chert (10), Mudstone (7), Silcrete (5), Indeterminate (3), Chalcedony (1), Volcanic (1), Silicified Sandstone (1), Silicified Sandstone/Tuff (1)	Flake (1,339), Broken Flake (1,360), Flaked Piece (391), Retouched Flake (61), Core (2), Grindstone Flake (1), Heat Shatter (35)	No, but shell present in fill - <i>Pyrazus ebeninus</i> , <i>Anadara trapezia</i> , <i>Saccostrea glomerata</i> , <i>Dicathais orbita</i>	Resource acquisition and processing, with brief period of occupation in Late Holocene	Occupation period in Late Holocene (2,000-3,000 BP)

Location	Distance from Project Area	Total area excavated (m ²)	Artefact count	Average artefact density (per m ²)	Artefact material (count)	Artefact type (count)	Presence of midden (Yes/No) - most abundant shellfish species	Site Interpretation	Estimated Age
38 Hannell St, Wickham (Eco Logical Australia 2020)	c1.3km north	7	1,476	210.9	Tuff (1,429), Chert/Chalcedony (35), Silcrete (6), FGS (5), Igneous (1)	Flake (881), Broken Flake (321), Angular Fragment (252), Core/ Core Fragment (22)	No	Repeated or longer-term camp site, stone tool production (secondary reduction)	Unspecified
Wickham Transport Interchange (Artefact Heritage 2016)	c1.8km north-west	60	3,394	56.6 (ranging from 25.3-91.3 by excavation unit)	IMT (3,311), Silcrete (46), Chert (7), Petrified Wood (6), Fine Grained Sedimentary (7), Chalcedony (6), Quartz (3), Igneous (3), Glass (3), Indeterminate (2)	Broken Flake (219), Flake (96), Angular Fragment (74), Core/ Core Fragment (7)	Yes, but fragmentary with tentative species identification – <i>Anadara trapezia/Ostrea Angasi, Pyrazus Ebeninus/Cabestana spengleri</i>	Multiple events over time – primarily resource acquisition and processing	Early to Late Holocene (7,000 BP – c1800s)